
JULY

TACOMA RAIL

2019

**INTERIM
FINANCIAL
REPORT**



Public Utility Board

KAREN LARKIN

Chair

BRYAN FLINT

Vice-Chair

MARK PATTERSON

Secretary

CHRISTINE COOLEY

Member

CARLOS M. WATSON

Member

JACKIE FLOWERS

Director of Utilities

DALE KING

Rail Superintendent

ANDREW CHERULLO

Finance Director

DEPARTMENT OF PUBLIC UTILITIES

CITY OF TACOMA

This page intentionally left blank.

CITY OF TACOMA, WASHINGTON
DEPARTMENT OF PUBLIC UTILITIES, BELT LINE DIVISION

TACOMA RAIL

TABLE OF CONTENTS

Note: These financial statements are interim, unaudited reports prepared primarily for the use of management. Not all transactions reported in these statements have been recorded on the full accrual basis of accounting or in accordance with generally accepted accounting principles.

Statements of Net Position (Unaudited)1

Statements of Revenues, Expenses and Changes in Net Position (Unaudited)3

Summary of Switching Revenues and Switching Activities (Unaudited).....5

Supplemental Data8

City of Tacoma, Washington
Department of Public Utilities
Tacoma Rail

Statements of Net Position (Unaudited)
July 31, 2019 and July 31, 2018

ASSETS	<u>JULY 31,</u> <u>2019</u>	<u>JULY 31,</u> <u>2018</u>
CAPITAL ASSETS		
Road and Equipment Property	\$47,179,212	\$46,585,757
Less Accumulated Depreciation	<u>(22,824,667)</u>	<u>(21,072,043)</u>
Total	24,354,545	25,513,714
Construction Work in Progress	<u>1,585,821</u>	<u>476,193</u>
Net Capital Assets	25,940,366	25,989,907
CURRENT ASSETS		
Cash & Equity in Pooled Investments	14,778,008	10,915,393
Customer Accounts Receivable	3,769,580	3,203,290
Grants Receivable	3,381	-
Prepayments	1,027,304	426,512
Materials and Supplies Inventory	<u>1,218,788</u>	<u>1,271,023</u>
Total Current Assets	20,797,061	15,816,218
DEFERRED OUTFLOWS		
Deferred Outflows for OPEB	<u>993,546</u>	<u>-</u>
TOTAL ASSETS	<u><u>\$47,730,973</u></u>	<u><u>\$41,806,125</u></u>

	JULY 31, 2019	JULY 31, 2018
NET POSITION AND LIABILITIES		
NET POSITION		
Net Investment in Capital Assets	\$21,190,220	\$20,419,518
Unrestricted	2,603,996	9,623,230
TOTAL NET POSITION	23,794,216	30,042,748
LONG-TERM DEBT, NET OF CURRENT MATURITIES		
State Loans	3,929,896	4,750,140
Total Long-Term Liabilities	3,929,896	4,750,140
CURRENT LIABILITIES		
Accounts Payable	544,351	464,759
Wages Payable	340,507	285,300
Unemployment and other Tax Payables	354,751	300,083
Volume Incentive Payable	625,000	-
Current Portion of Long Term Debt	820,250	820,250
Current Portion of Compensated Absences	118,329	112,418
Total Current Liabilities	2,803,188	1,982,810
LONG-TERM LIABILITIES		
On the Job Injury Reserve	852,255	821,260
Long-Term Portion of Compensated Absences	1,064,965	1,011,762
Other Contingent Liability	2,320,000	-
Other Post Employment Benefits	12,179,967	-
Incurred but not Reported Claims	496,684	3,197,405
Total Long-Term Liabilities	16,913,871	5,030,427
TOTAL LIABILITIES	23,646,955	11,763,377
DEFERRED INFLOWS		
Deferred Inflows for OPEB	289,802	-
TOTAL NET POSITION, LIABILITIES AND DEFERRED INFLOWS	\$47,730,973	\$41,806,125

These statements should be read in conjunction with the Notes to the Financial Statements contained in the previous year-end Financial Report.

City of Tacoma, Washington
Department of Public Utilities
Tacoma Rail

Statements of Revenues, Expenses and Changes in Net Position (Unaudited)
July 31, 2019 and July 31, 2018

	JULY 2019	JULY 2018
OPERATING REVENUES		
Switching Revenues	\$2,602,756	\$2,326,716
Demurrage and Other Operating Revenues	594,971	416,475
Total Operating Revenues	<u>3,197,727</u>	<u>2,743,191</u>
OPERATING EXPENSES		
Maintenance of Way and Structures		
Salaries and Wages	85,750	69,140
Supplies and Expense	102,887	70,888
Mechanical		
Salaries and Wages	189,537	170,531
Supplies and Expense	401,804	377,932
Operations		
Salaries and Wages	841,502	818,606
Supplies and Expense	89,917	124,866
Administration		
Salaries and Wages	204,226	210,625
Supplies and Expense	162,596	271,993
Taxes - State	43,973	38,074
Depreciation	146,903	144,789
Total Operating Expenses	<u>2,269,095</u>	<u>2,297,444</u>
Net Operating Income	928,632	445,747
NON-OPERATING REVENUES (EXPENSES)		
Interest Income	24,856	14,008
Miscellaneous	72,856	72,166
Total Non-Operating Revenues	<u>97,712</u>	<u>86,174</u>
Contributions - Grants	3,381	-
Total Contributions	<u>3,381</u>	<u>-</u>
Transfers		
City of Tacoma Gross Earnings Tax	(263,635)	(226,349)
CHANGE IN NET POSITION	<u>\$766,090</u>	<u>\$305,572</u>
TOTAL NET POSITION - JANUARY 1		
TOTAL NET POSITION - JULY 31		

YEAR TO DATE			
JULY 31, 2019	JULY 31, 2018	2019/2018 VARIANCE	PERCENT CHANGE
\$17,500,071	\$16,014,142	\$1,485,929	9.3%
3,588,834	2,836,317	752,517	26.5%
21,088,905	18,850,459	2,238,446	11.9%
603,797	532,894	70,903	13.3%
637,148	866,501	(229,353)	-26.5%
1,359,563	1,130,073	229,490	20.3%
2,561,469	2,208,459	353,010	16.0%
5,943,315	5,675,083	268,232	4.7%
770,485	852,912	(82,427)	-9.7%
1,482,358	1,542,532	(60,174)	-3.9%
2,463,204	2,203,301	259,903	11.8%
294,506	264,863	29,643	11.2%
1,028,429	1,013,520	14,909	1.5%
17,144,274	16,290,138	854,136	5.2%
3,944,631	2,560,321	1,384,310	54.1%
210,485	131,206	79,279	60.4%
539,176	636,699	(97,523)	-15.3%
749,661	767,905	(18,244)	-2.4%
29,168	112,306	(83,138)	-74.0%
29,168	112,306	(83,138)	-74.0%
(1,742,957)	(1,565,159)	(177,798)	-11.4%
2,980,503	1,875,373	1,105,130	58.9%
20,813,713	28,167,375		
<u>\$23,794,216</u>	<u>\$30,042,748</u>		

These statements should be read in conjunction with the Notes to the Financial Statements contained in the previous year-end Financial Report.

City of Tacoma, Washington
Department of Public Utilities
Tacoma Rail

Summary of Switching Revenues and Switching Activities (Unaudited)
July 31, 2019 and July 31, 2018

	July 2019	July 2018
SWITCHING REVENUES		
LINE HAULS--INTERMODAL	\$1,076,274	\$986,706
LINE HAULS--COMMERCIAL	1,337,512	1,173,930
LINE HAULS--CAPITAL DIVISION	50,730	26,849
MISCELLANEOUS SWITCHES	<u>138,240</u>	<u>139,231</u>
TOTAL SWITCHING REVENUES	<u><u>\$2,602,756</u></u>	<u><u>\$2,326,716</u></u>
 SWITCHING ACTIVITIES (CARS)		
LINE HAULS--INTERMODAL	6,300	5,886
LINE HAULS--COMMERCIAL	2,535	2,433
LINE HAULS--CAPITAL DIVISION	89	47
MISCELLANEOUS SWITCHES	<u>851</u>	<u>1,023</u>
TOTAL CARS SWITCHED	<u><u>9,775</u></u>	<u><u>9,389</u></u>

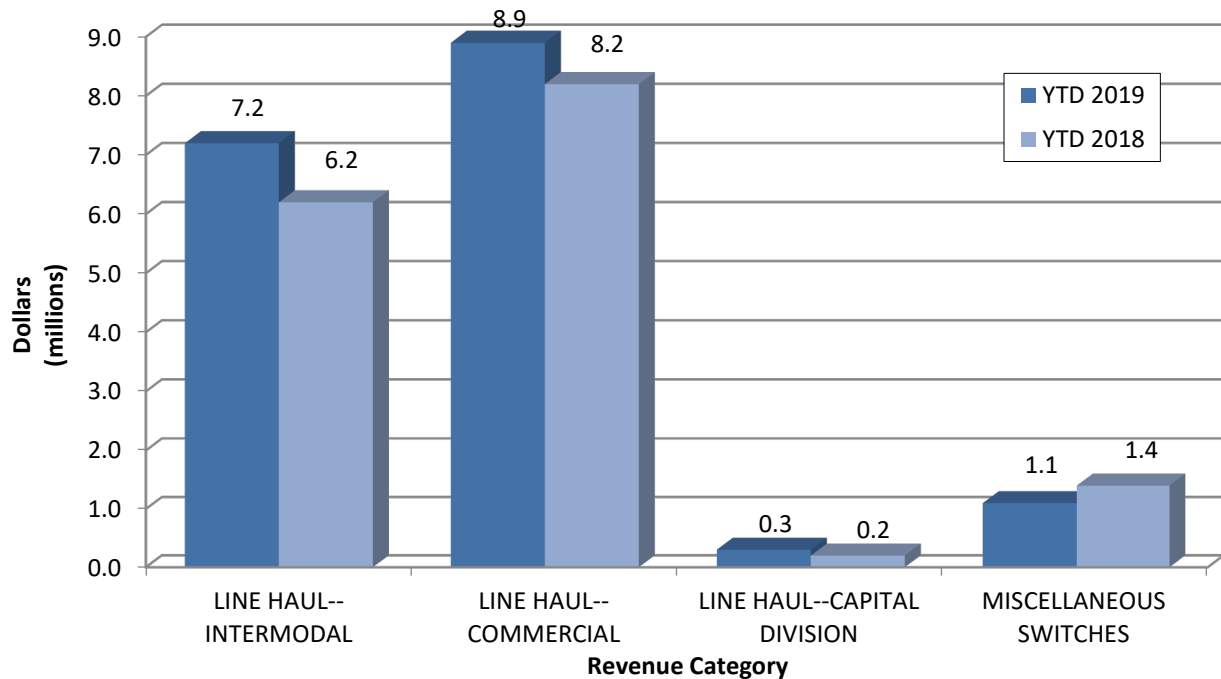
YEAR TO DATE			
July 31, 2019	July 31, 2018	2019/2018 VARIANCE	PERCENT CHANGE
\$7,230,516	\$6,216,988	\$1,013,528	16.3%
8,869,816	8,178,465	691,351	8.5%
272,460	245,909	26,551	10.8%
1,127,279	1,372,780	(245,501)	-17.9%
<u>\$17,500,071</u>	<u>\$16,014,142</u>	<u>\$1,485,929</u>	<u>9.3%</u>
42,749	36,599	6,150	16.8%
18,511	16,379	2,132	13.0%
478	449	29	6.5%
7,017	8,156	(1,139)	-14.0%
<u>68,755</u>	<u>61,583</u>	<u>7,172</u>	<u>11.6%</u>

This page intentionally left blank.

Supplemental Data

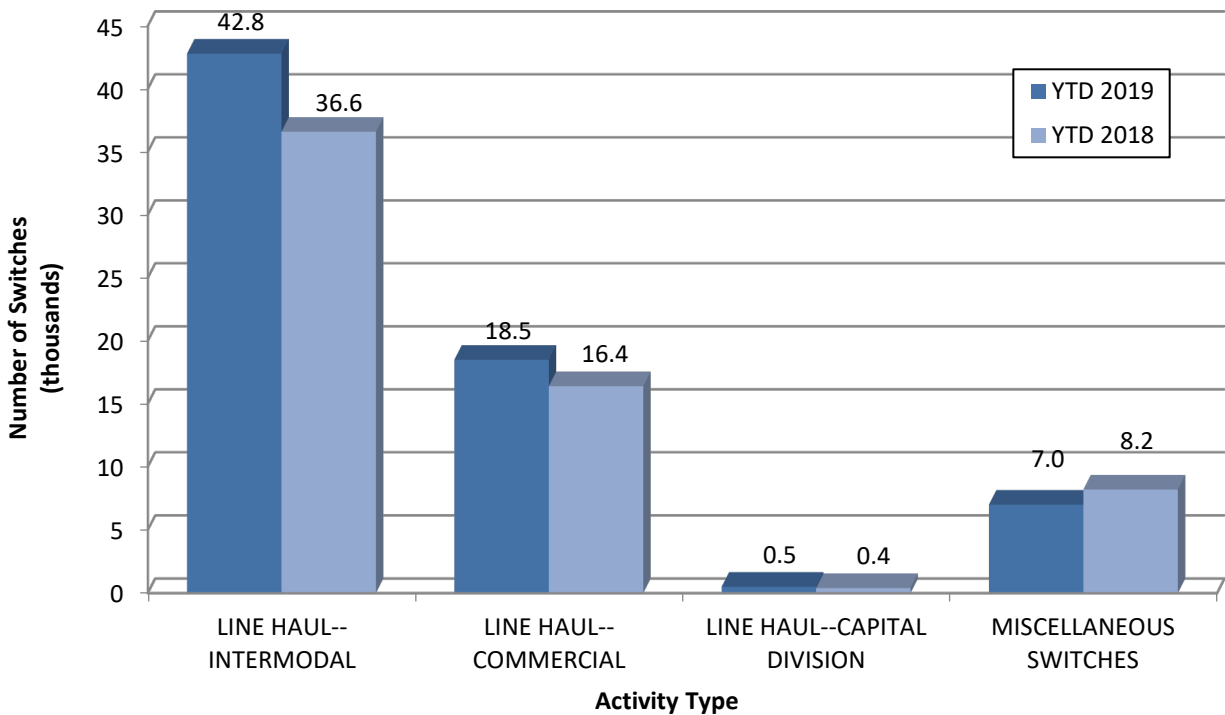
SWITCHING REVENUES

Year to Date - July 2019 & 2018

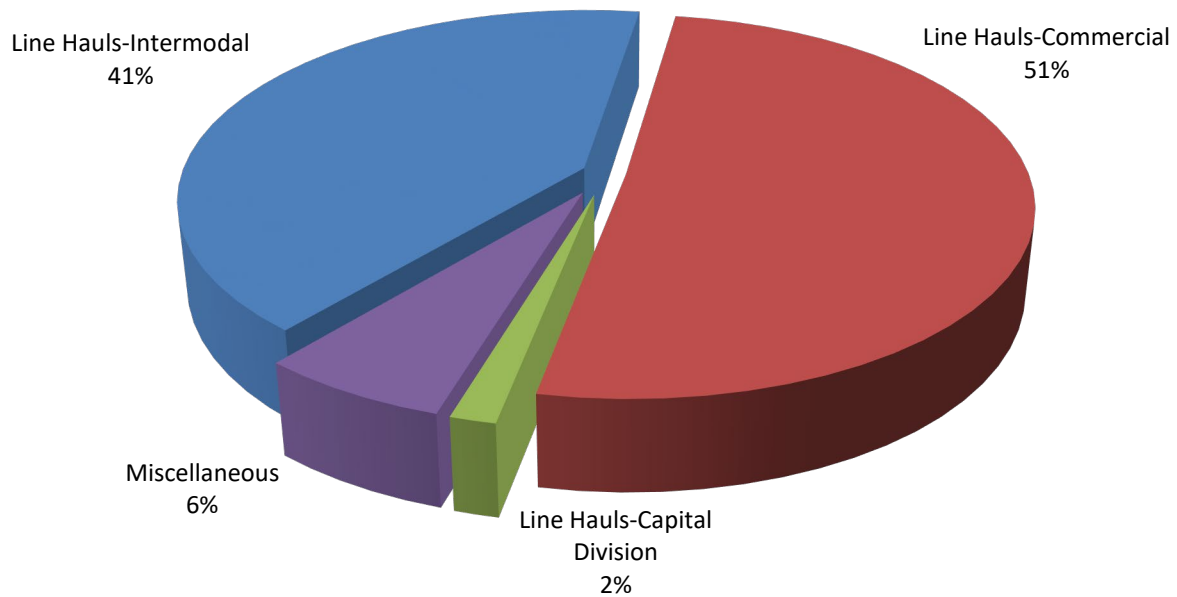


SWITCHING ACTIVITIES

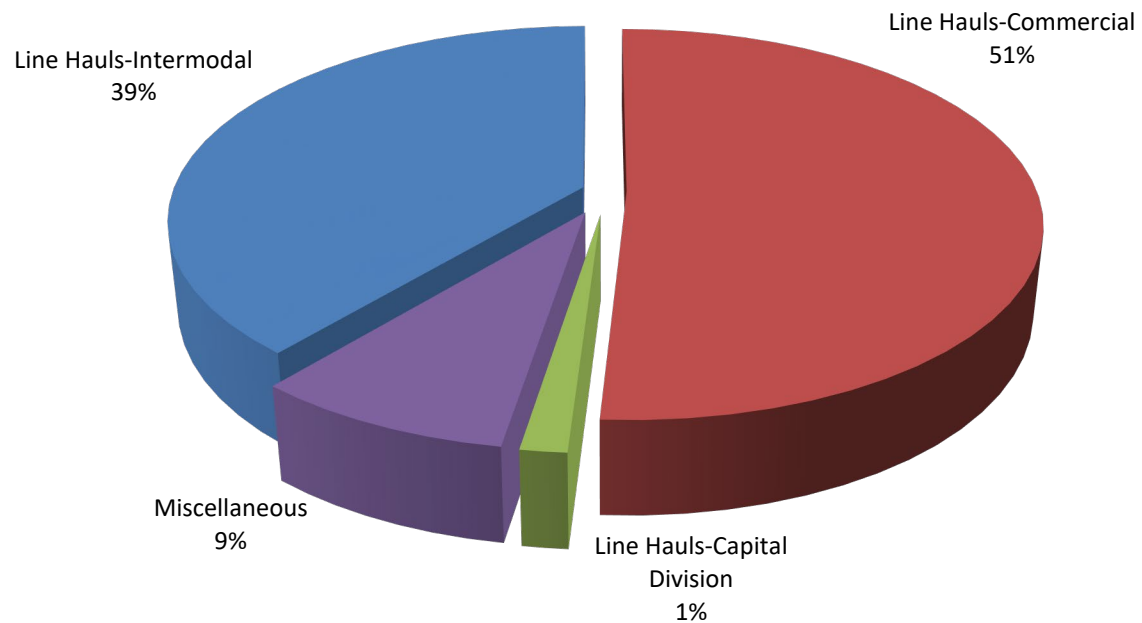
Year to Date - July 2019 & 2018



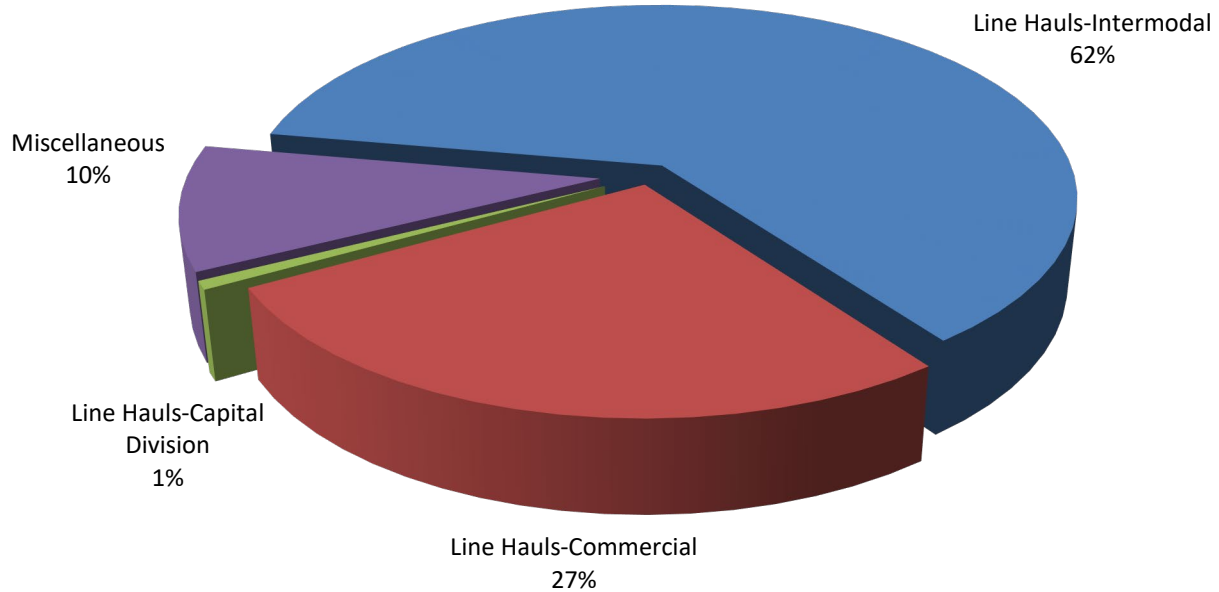
SWITCHING REVENUES
Year to Date - July 2019 (\$17,500,071)



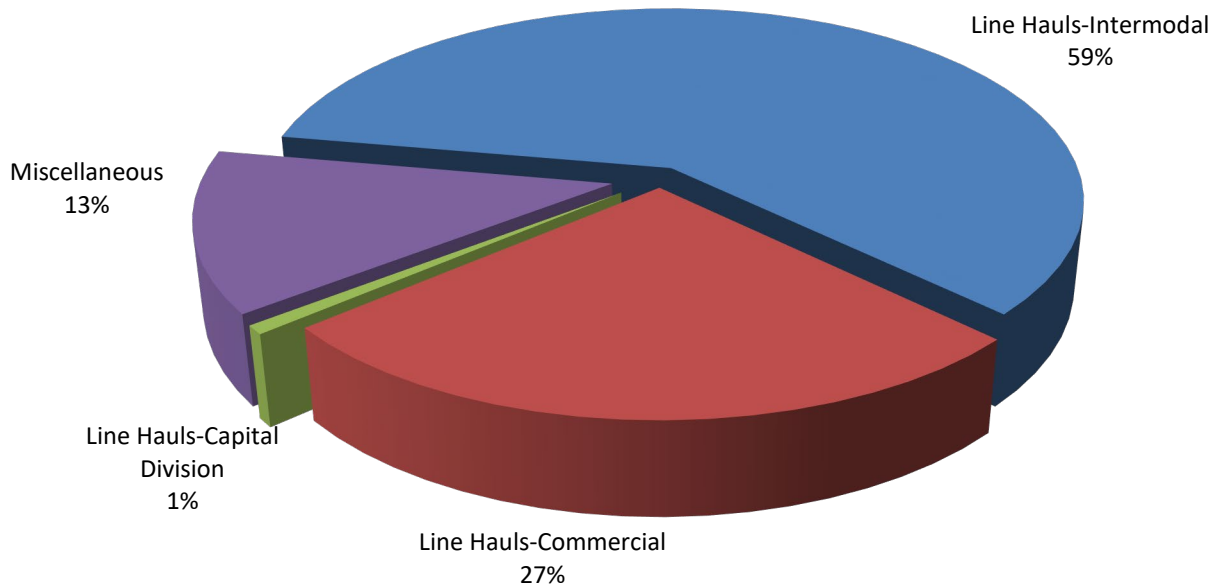
SWITCHING REVENUES
Year to Date - July 2018 (\$16,014,142)



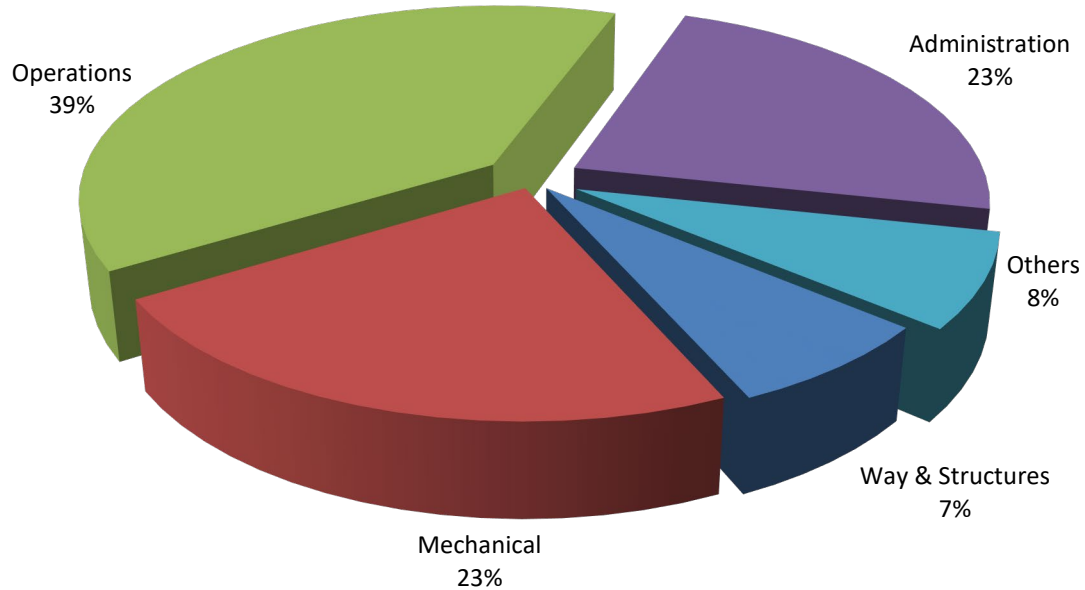
SWITCHING ACTIVITY
Year to Date - July 2019 (68,755 cars)



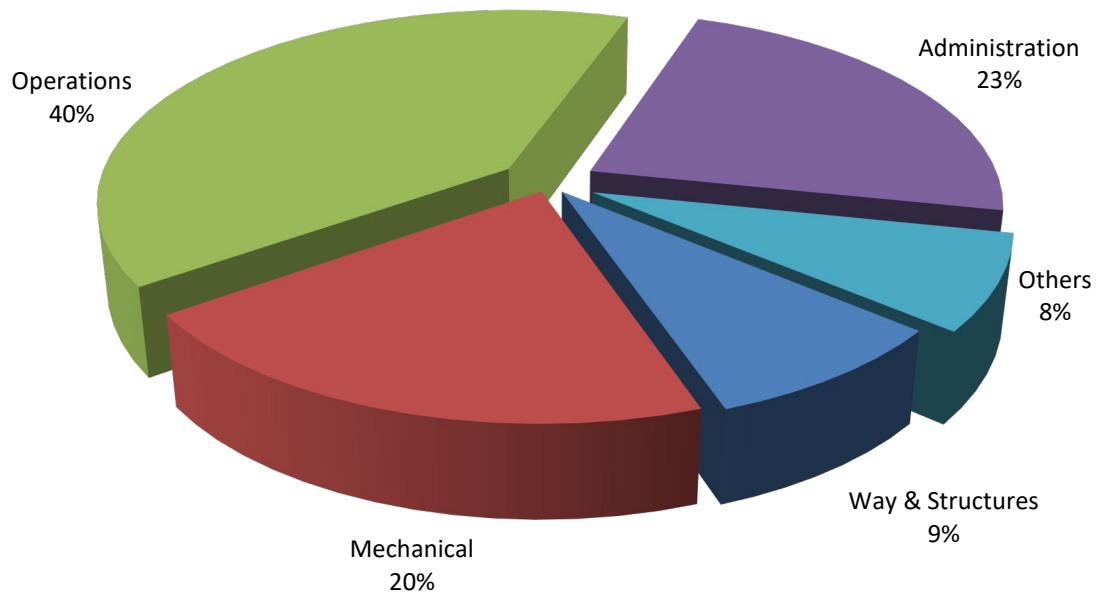
SWITCHING ACTIVITY
Year to Date - July 2018 (61,583 cars)



TOTAL OPERATING EXPENSES
Year to Date - July 2019 (\$17,144,274)



TOTAL OPERATING EXPENSES
Year to Date - July 2018 (\$16,290,138)





The City of Tacoma does not discriminate on the basis of disability in any of its programs, activities, or services. To request this information in an alternative format or to request a reasonable accommodation, please contact the City Clerk's Office at (253) 591-5505. TTY or speech to speech users please dial 711 to connect to Washington Relay Services.