

---

**OCTOBER**

***TACOMA RAIL***

**2021**

**INTERIM  
FINANCIAL  
REPORT**





# Public Utility Board

MARK PATTERSON  
Chair

CHRISTINE COOLEY  
Vice-Chair

CARLOS M. WATSON  
Secretary

HOLLAND COHEN  
Member

JOHN O'LOUGHLIN  
Member

JACKIE FLOWERS  
Director of Utilities

DALE KING  
Rail Superintendent

ANDREW CHERULLO  
Finance Director

DEPARTMENT OF PUBLIC UTILITIES

CITY OF TACOMA

*This page intentionally left blank.*

CITY OF TACOMA, WASHINGTON  
DEPARTMENT OF PUBLIC UTILITIES, BELT LINE DIVISION  
Doing Business As

TACOMA RAIL

TABLE OF CONTENTS

*Note: These financial statements are interim, unaudited reports prepared primarily for the use of management. Not all transactions reported in these statements have been recorded on the full accrual basis of accounting or in accordance with generally accepted accounting principles.*

Statements of Net Position (Unaudited) .....1

Statements of Revenues, Expenses and Changes in Net Position (Unaudited) .....3

Summary of Switching Revenues and Switching Activities (Unaudited).....4

Supplemental Data .....6

City of Tacoma, Washington  
Department of Public Utilities  
Tacoma Rail  
Statements of Net Position (Unaudited)  
October 31, 2021 and October 31, 2020

ASSETS	2021	2020
<b>CAPITAL ASSETS</b>		
Road and Equipment Property	\$59,521,110	\$48,450,330
Less Accumulated Depreciation	<u>(28,407,951)</u>	<u>(24,973,077)</u>
Total	31,113,159	23,477,253
Construction Work in Progress	<u>1,780,335</u>	<u>3,640,681</u>
Net Capital Assets	32,893,494	27,117,934
<b>CURRENT ASSETS</b>		
Cash & Equity in Pooled Investments	14,790,117	15,627,418
Customer Accounts Receivable	3,239,623	3,469,533
Grants Receivable	312,973	-
Prepayments	1,366,256	1,479,136
Materials and Supplies Inventory	<u>1,325,971</u>	<u>1,278,140</u>
Total Current Assets	21,034,940	21,854,227
<b>DEFERRED OUTFLOWS</b>		
Deferred Outflows for OPEB	<u>1,598,608</u>	<u>738,535</u>
<b>TOTAL ASSETS AND DEFERRED OUTFLOW OF RESOURCES</b>	<u><u>\$55,527,042</u></u>	<u><u>\$49,710,696</u></u>

*These statements should be read with the Notes to the Financial Statements contained in the previous year-end Financial Report.*

<b>NET POSITION AND LIABILITIES</b>	<b>2021</b>	<b>2020</b>
<b>NET POSITION</b>		
Net Investment in Capital Assets	\$29,471,428	\$23,210,003
Unrestricted	3,124,170	4,331,660
<b>TOTAL NET POSITION</b>	<b>32,595,598</b>	<b>27,541,663</b>
<b>LONG-TERM DEBT, NET OF CURRENT MATURITIES</b>		
State Loans	2,578,511	3,087,681
Total Long-Term Liabilities	2,578,511	3,087,681
<b>CURRENT LIABILITIES</b>		
Accounts Payable	686,070	573,821
Customer Deposits	100,000	100,000
Wages Payable	222,300	203,992
Unemployment and Other Tax Payables	309,827	320,073
Current Portion of Long-Term Debt	843,555	820,250
Current Portion of Compensated Absences	136,156	123,430
Total Current Liabilities	2,297,908	2,141,566
<b>LONG-TERM LIABILITIES</b>		
On the Job Injury Reserve	723,081	742,405
Long-Term Portion of Compensated Absences	1,225,403	1,110,871
Pension Withdrawal Liability	2,354,440	2,354,440
OPEB Liability	10,987,505	9,947,627
Incurred but not Reported Claims	334,081	417,958
Total Long-Term Liabilities	15,624,510	14,573,301
<b>TOTAL LIABILITIES</b>	<b>20,500,929</b>	<b>19,802,548</b>
<b>DEFERRED INFLOWS</b>		
Deferred Inflows for OPEB	2,430,515	2,366,485
<b>TOTAL NET POSITION, LIABILITIES AND DEFERRED INFLOWS</b>	<b>\$55,527,042</b>	<b>\$49,710,696</b>

City of Tacoma, Washington  
Department of Public Utilities  
Tacoma Rail  
Statements of Revenues, Expenses and Changes in Net Position (Unaudited)  
October 31, 2021 and October 31, 2020

			YEAR TO DATE			
	OCTOBER 2021	OCTOBER 2020	OCTOBER 31 2021	OCTOBER 31 2020	2021/2020 VARIANCE	PERCENT CHANGE
<b>OPERATING REVENUES</b>						
Switching Revenues	\$2,218,498	\$2,246,422	\$23,174,934	\$22,165,955	\$1,008,979	4.6%
Demurrage and Other Operating Revenues	604,478	599,665	5,705,425	5,482,358	223,067	4.1%
Total Operating Revenues	2,822,976	2,846,087	28,880,359	27,648,313	1,232,046	4.5%
<b>OPERATING EXPENSES</b>						
Maintenance of Way and Structures						
Salaries and Wages	88,249	92,246	864,928	885,102	(20,174)	-2.3%
Supplies and Expense	152,770	143,604	1,067,688	1,207,076	(139,388)	-11.5%
Mechanical						
Salaries and Wages	216,556	209,560	2,007,800	1,975,064	32,736	1.7%
Supplies and Expense	381,994	377,686	4,415,909	3,897,422	518,487	13.3%
Operations						
Salaries and Wages	831,733	808,868	7,828,036	8,174,459	(346,423)	-4.2%
Supplies and Expense	188,873	119,555	1,426,071	1,212,096	213,975	17.7%
Administration						
Salaries and Wages	261,225	247,194	2,531,765	2,429,587	102,178	4.2%
Supplies and Expense	320,025	251,236	3,261,977	2,625,493	636,484	24.2%
Taxes - State	43,887	44,908	454,580	421,876	32,704	7.8%
Depreciation	188,716	148,234	1,893,466	1,487,108	406,358	27.3%
Total Operating Expenses	2,674,028	2,443,091	25,752,220	24,315,283	1,436,937	5.9%
Net Operating Income	148,948	402,996	3,128,139	3,333,030	(204,891)	-6.1%
<b>NON-OPERATING REVENUES (EXPENSES)</b>						
Interest Income	8,895	15,885	(125,732)	108,844	(234,576)	-215.5%
Miscellaneous	21,101	22,882	305,202	763,378	(458,176)	-60.0%
Total Non-Operating Revenues	29,996	38,767	179,470	872,222	(692,752)	-79.4%
Contributions - Grants	312,973	-	713,253	24,027	689,226	2868.5%
Total Contributions	312,973	-	713,253	24,027	689,226	2868.5%
Transfers						
City of Tacoma Gross Earnings Tax	(228,229)	(230,762)	(2,329,444)	(2,288,761)	(40,683)	-1.8%
Transfers from (to) other funds	-	-	2,818	(500,000)	502,818	100.6%
Total Transfers	(228,229)	(230,762)	(2,326,626)	(2,788,761)	462,135	16.6%
<b>CHANGE IN NET POSITION</b>	<u>\$263,688</u>	<u>\$211,001</u>	1,694,236	1,440,518	253,718	17.6%
<b>TOTAL NET POSITION - JANUARY 1</b>			<u>30,901,362</u>	<u>26,101,145</u>		
<b>TOTAL NET POSITION - OCTOBER 31</b>			<u>\$32,595,598</u>	<u>\$27,541,663</u>		

*These statements should be read in conjunction with the Notes to the Financial Statements contained in the previous year-end Financial Report.*



City of Tacoma, Washington  
Department of Public Utilities  
Tacoma Rail  
Summary of Switching Revenues and Switching Activities (Unaudited)  
October 31, 2021 and October 31, 2020

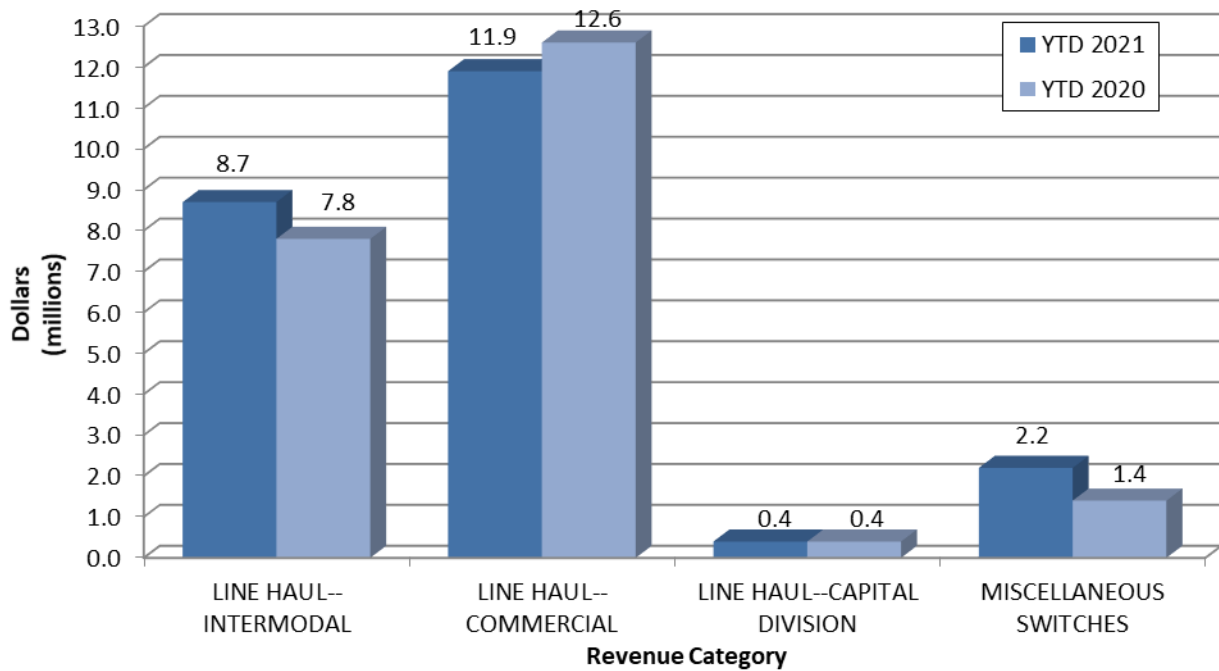
	October 2021	October 2020	YEAR TO DATE		2021/2020 VARIANCE	PERCENT CHANGE
			October 31, 2021	October 31, 2020		
<b>SWITCHING REVENUES</b>						
LINE HAULS--INTERMODAL	\$827,235	\$815,517	\$8,709,639	\$7,851,753	\$857,886	10.9%
LINE HAULS--COMMERCIAL	1,203,147	1,232,738	11,924,466	12,569,218	(644,752)	-5.1%
LINE HAULS--CAPITAL DIVISION	38,781	50,160	371,610	358,530	13,080	3.6%
MISCELLANEOUS SWITCHES	149,335	148,007	2,169,219	1,386,454	782,765	56.5%
TOTAL SWITCHING REVENUES	<u>\$2,218,498</u>	<u>\$2,246,422</u>	<u>\$23,174,934</u>	<u>\$22,165,955</u>	<u>\$1,008,979</u>	4.6%
<b>SWITCHING ACTIVITIES (CARS)</b>						
LINE HAULS--INTERMODAL	4,967	5,117	53,790	47,078	6,711	14.3%
LINE HAULS--COMMERCIAL	2,233	2,451	23,189	23,819	(630)	-2.6%
LINE HAULS--CAPITAL DIVISION	66	88	633	629	4	0.6%
MISCELLANEOUS SWITCHES	726	915	5,472	7,496	(2,024)	-27.0%
TOTAL CARS SWITCHED	<u>7,992</u>	<u>8,571</u>	<u>83,084</u>	<u>79,022</u>	<u>4,061</u>	5.1%

*This page intentionally left blank.*

# Supplemental Data

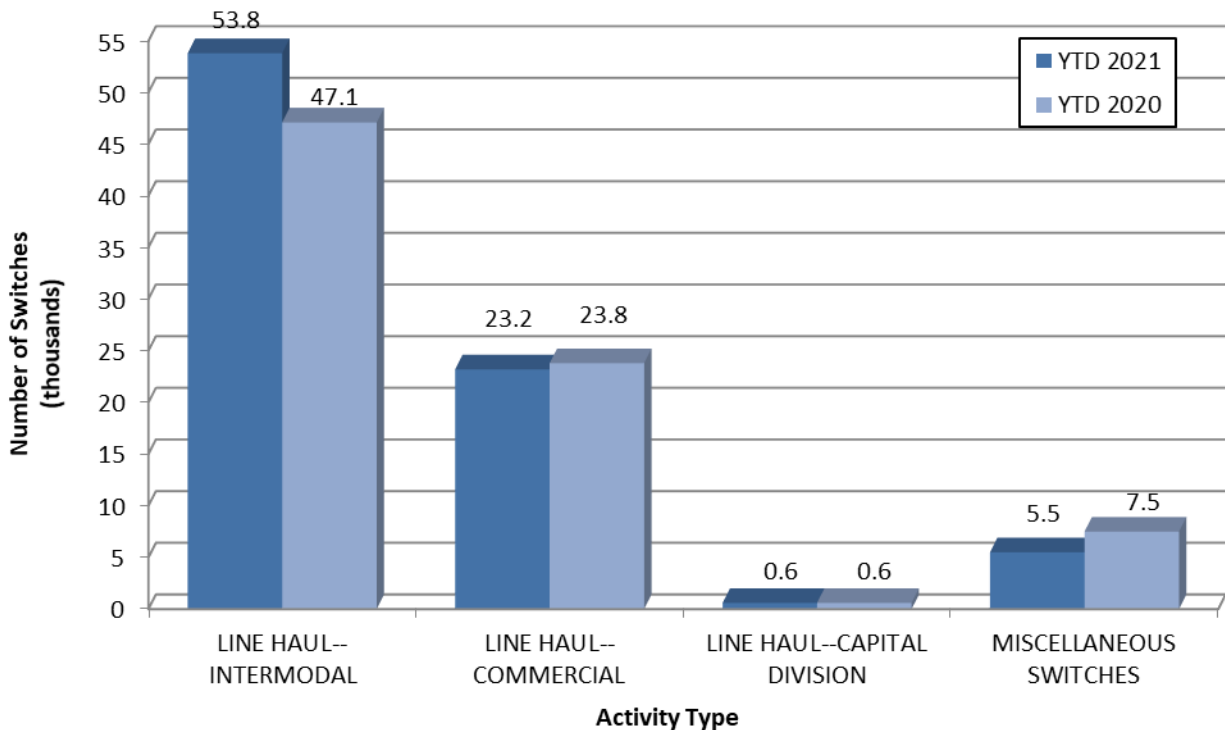
## SWITCHING REVENUES

### Year to Date - October 2021 & 2020

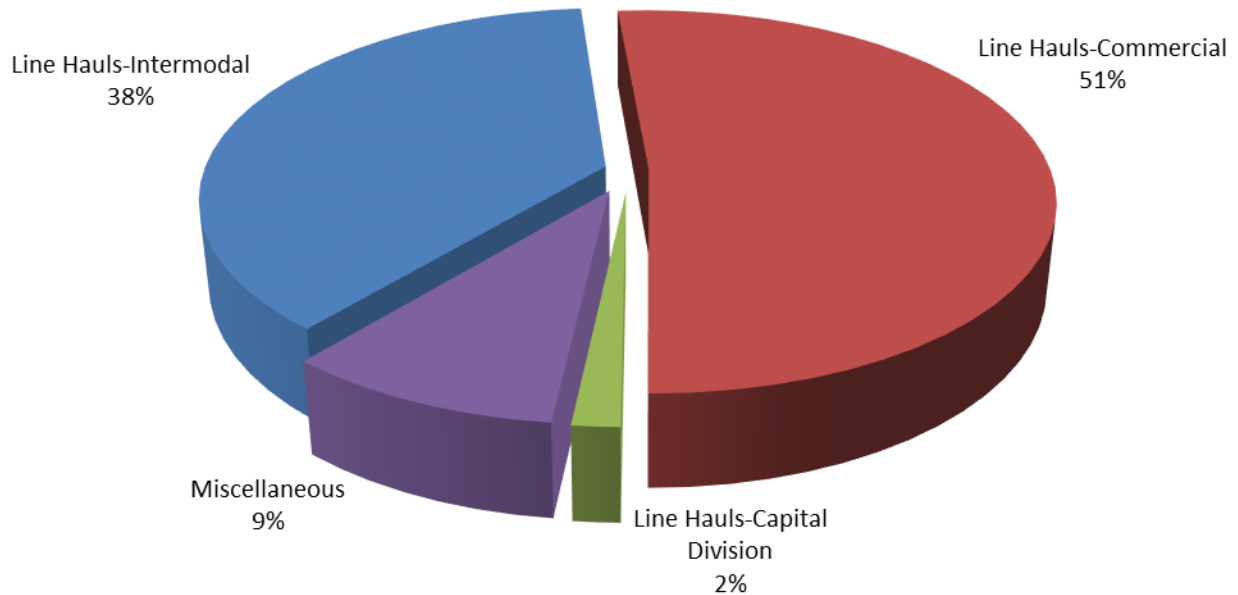


## SWITCHING ACTIVITIES

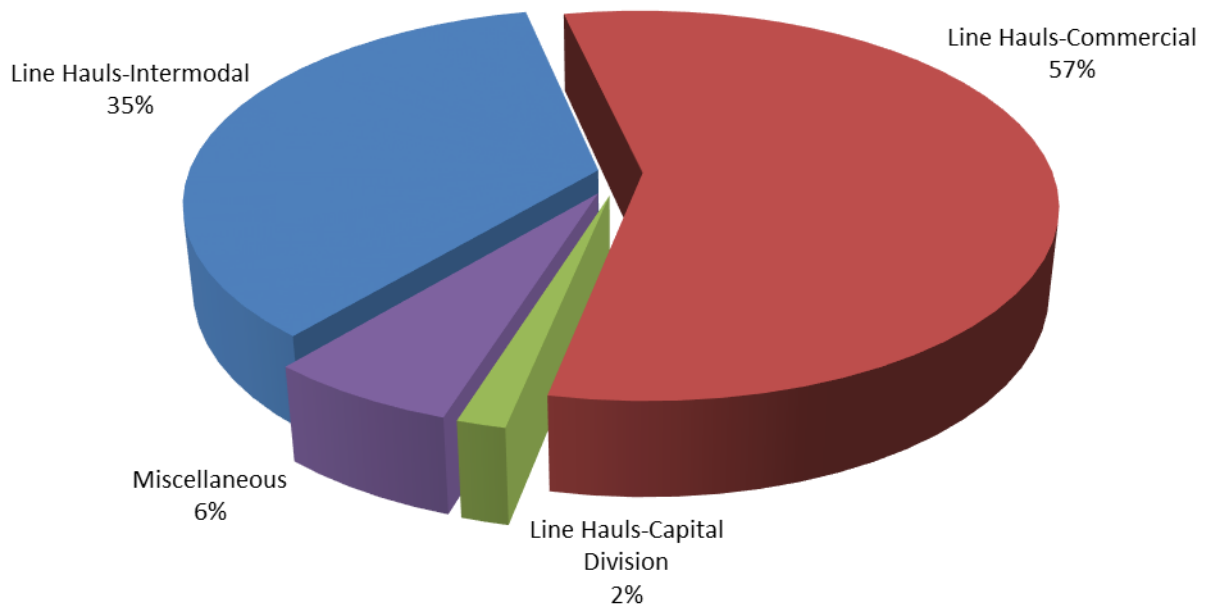
### Year to Date - October 2021 & 2020



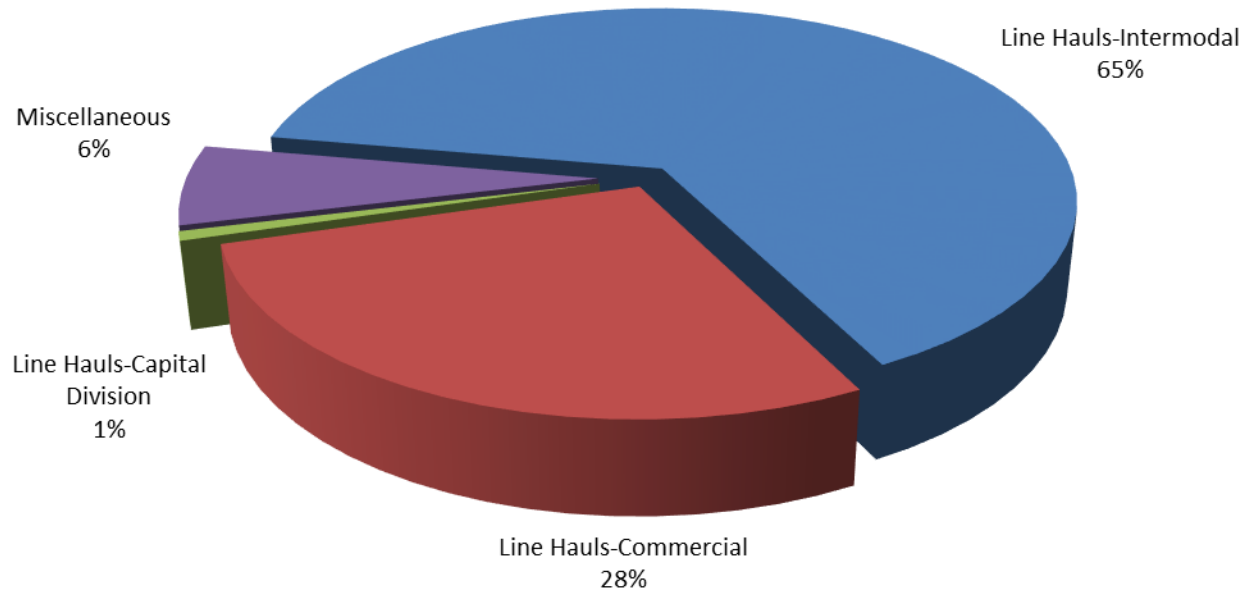
**SWITCHING REVENUES**  
**Year to Date - October 2021 (\$23,174,934)**



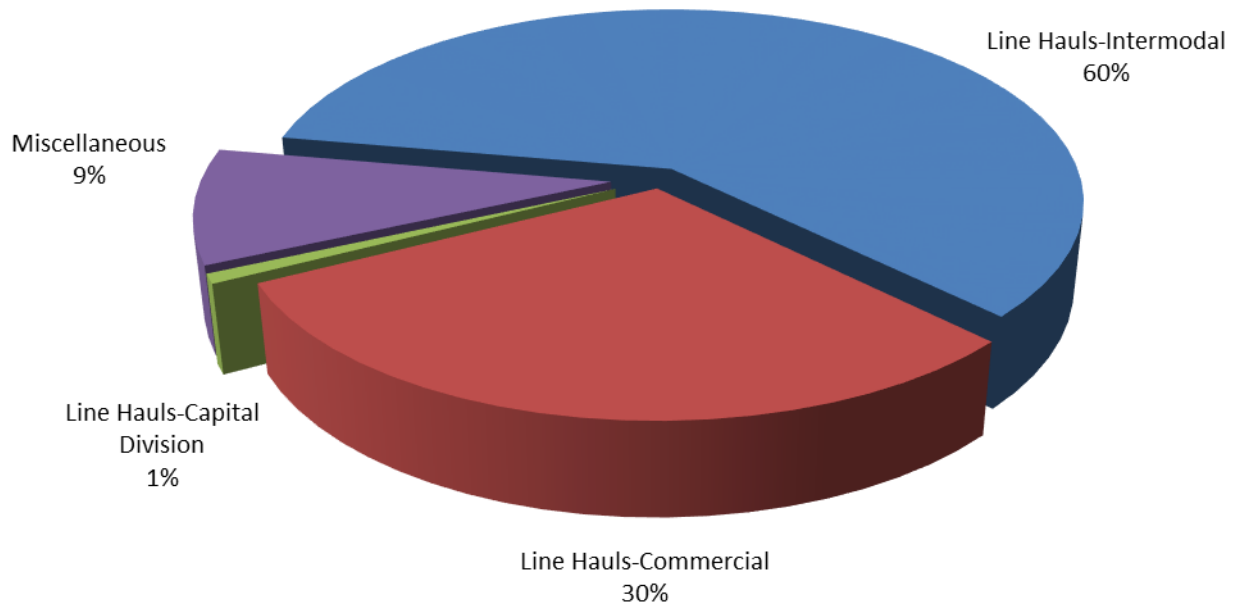
**SWITCHING REVENUES**  
**Year to Date - October 2020 (\$22,165,955)**



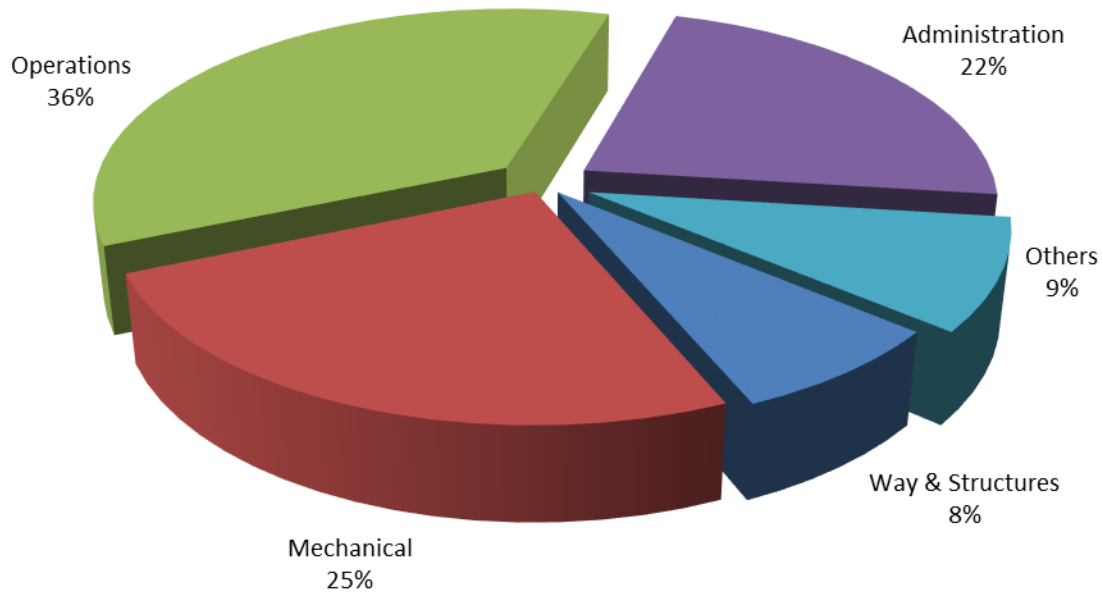
**SWITCHING ACTIVITY**  
**Year to Date - October 2021 (83,084 cars)**



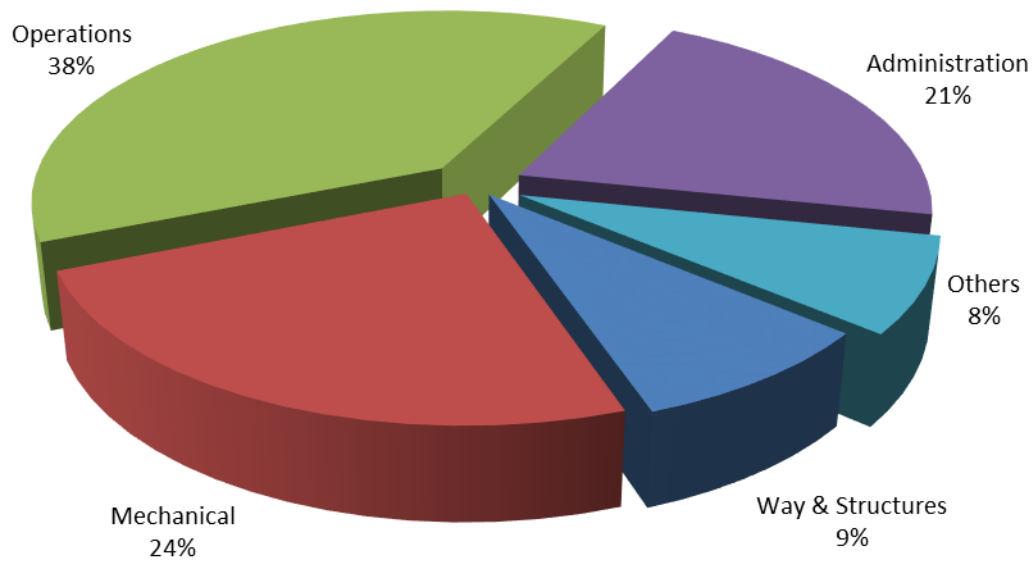
**SWITCHING ACTIVITY**  
**Year to Date - October 2020 (79,022 cars)**



**TOTAL OPERATING EXPENSES**  
**Year to Date - October 2021 (\$25,752,220)**



**TOTAL OPERATING EXPENSES**  
**Year to Date - October 2020 (\$24,315,283)**





The City of Tacoma does not discriminate on the basis of disability in any of its programs, activities, or services. To request this information in an alternative format or to request a reasonable accommodation, please contact the City Clerk's Office at (253) 591-5505. TTY or speech to speech users please dial 711 to connect to Washington Relay Services.