

McKinley Hill Neighborhood Planning

Walkability Committee – Meeting #3

March 2, 2023

AGENDA

- Introductions
- Walkability Committee Recap
- E Division Ln and McKinley Intersection
- Streetscape Enhancement project
- Next Steps



PROJECT COMMITTEES

- **Arts Committee:**
 - **Focus:** Spaceworks mural project
 - **Future:** Placemaking Plan
- **Open Space Committee:**
 - **Focus:** Tree planting outreach, East I Street landscaping, McKinley Overlook activation/design
- **Walkability Committee:**
 - **Focus:** Intersection traffic calming; red curb painting; other quick wins
 - **Future:** Streetscape enhancement design



BACKGROUND

- **Spring – summer 2022:** McKinley Ave and E Division Ln intersection identified as a priority for calming
- **September 2022:** Community selected project
- **November 2022:** Walkability Committee meeting 1
- **December 2022:** Site visit
- **February 2022:** Walkability Committee meeting 2
- Follow-up survey sent February 2022



COMMUNITY BOOSTER PROJECT



Intersection safety enhancement at East Division Ln and McKinley Ave – Temporary bulb-outs, repainted crosswalk, and painted street mural to calm traffic

E Division Ln and McKinley Ave Intersection – Traffic Calming

- Narrowing roadway to calm traffic into business district
- Artist-designed mural (coordination with Arts committee)
- 190+ votes collected in-person and online
- This project selected as the priority

Quick-Build Examples with Art



BACKGROUND

- **2 conceptual design options reviewed at February meeting, based on community goals:**
 - Calm speeding traffic by narrowing the roadway
 - Make it easier for people walking to cross the street
 - Enhance neighborhood identity at the southern end of the McKinley business district by adding a street mural
- **Group requested third option**
- **Sent survey to group**

OPTION 1

Option 1 includes:

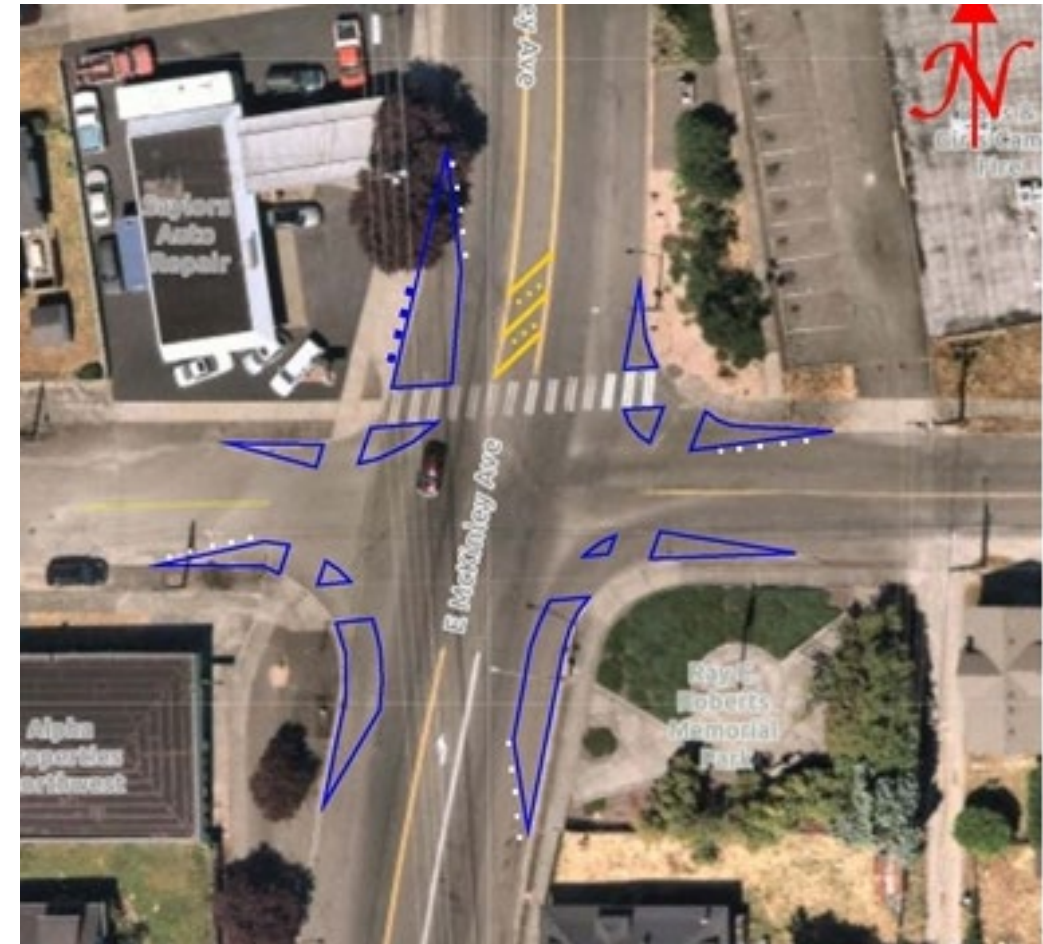
- mural bulb-outs at all 4 corners
- new striping in the median on the north
- plastic posts
- the northwest corner has a **smaller bulb-out** to avoid overlap with the driveway on McKinley
- the **open driveway and smaller bulb-out** leave more space for turning vehicles, but do less to narrow the width of the roadway



OPTION 2

Option 2 includes:

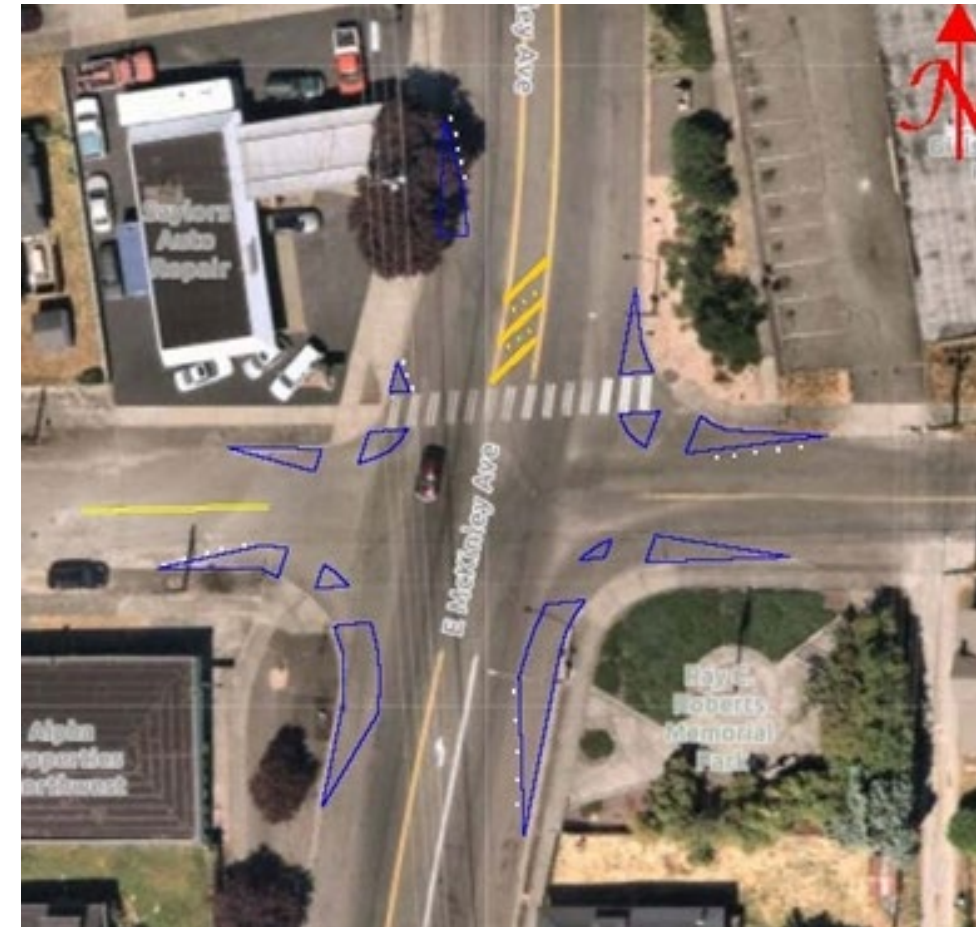
- mural bulb-outs at all 4 corners
- new striping in the median on the north
- plastic posts
- the northwest corner has a **larger bulb-out**, which overlaps with the driveway on McKinley
- the **driveway would be closed** to allow for a **larger bulb-out** and provide more traffic calming



OPTION 3

Option 3 includes:

- mural bulb-outs at all 4 corners
- new striping in the median on the north
- plastic posts
- the northwest corner has a **smaller bulb-out** to avoid overlap with the driveway on McKinley
- the **open driveway and smaller bulb-out** leave more space for vehicles and provide less traffic calming
- an **additional mural bulb-out with plastic posts on the north side of the driveway** (UNDER THE TREE) to slow traffic before the driveway



SURVEY RESULTS

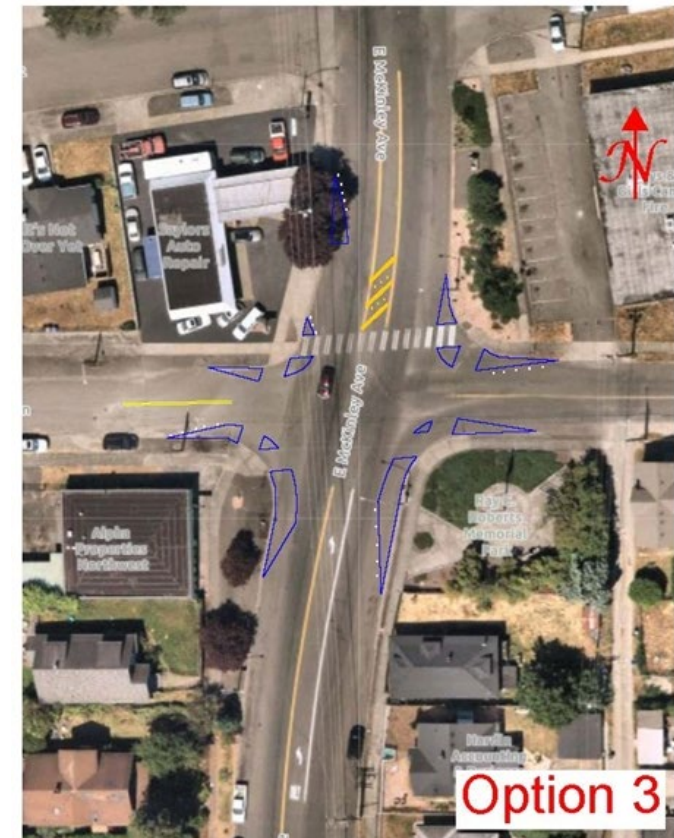
Participant ID	1st Choice	2nd Choice	3rd Choice
1	Option 3	Option 1	Option 2
2	Option 1	Option 2	Option 3
3	Option 3	Option 1	Option 2
4	Option 3	Option 1	Option 2
5	Option 3	Option 2	Option 1
6	Option 3	Option 2	Option 1
7 (email)	No option	No option	No option

1st Choice:

- Option 3: 5 votes

MURAL SELECTION & REVIEW

- Artist will be selected from City's Mural Roster
- Preference for artists connected to McKinley
- Panel will select artist and review design
- 5 person selection panel will include:
 - Walkability Committee member
 - Arts Committee member
 - Tacoma Arts Commissioner
 - 2 Community Members



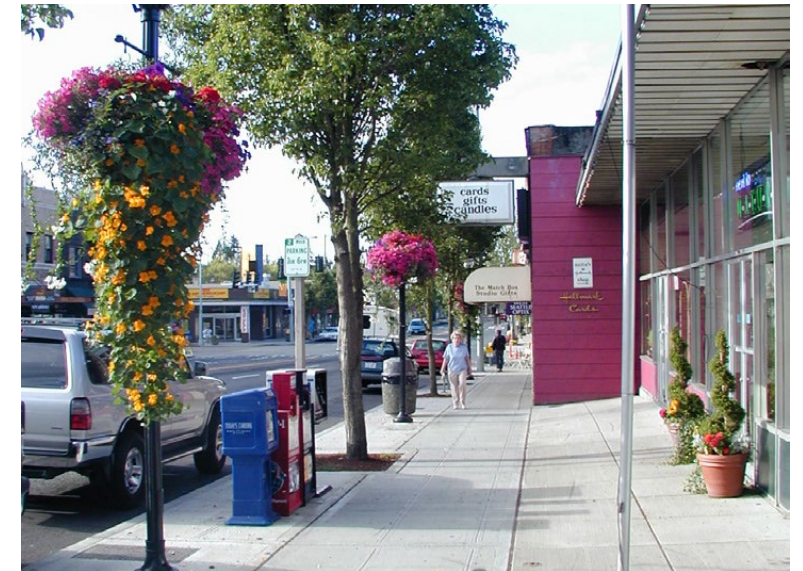
MURAL TIMELINE

Preliminary Schedule:

- **Week of April 3 – Call to Artists released to mural roster**
- **Week of May 8 – Preliminary scoring by panel**
- **Week of May 15 – Artist selection**
- **May/June – contracting & orientation**
- **July – review design**
- **September – install project and artwork**

STREETSCAPE ENHANCEMENT

- Preliminary design is funded in City budget!
- Our Town Grant proposal submitted to NEA
- McKinley Ave between E 34th St and E Division Ln
- Goals:
 - Strengthen sense of place with artwork, traffic calming, more usable sidewalk and public space
 - Add lighting, street furniture, and other amenities
 - Accommodate bicycles and address parking
 - Create neighborhood “gateway” open spaces




STREETSCAPE ENHANCEMENT

DRAFT 02/23/2023

Actions
McKinley Ave Safety and Usability

1. Install new speed limit signage to reduce the speed limit to 25MPH as part of Vision Zero (*).
2. Repaint existing business district crosswalks (*).
3. Enhance safety at the southern end of the business district at the E Division Ln and McKinley Ave intersection with temporary or permanent bulb-outs and safe crossings. Design in such a way that this intersection becomes an obvious gateway into McKinley and reflect McKinley's unique identity (see Placemaking Strategy, BV7). Funded via Community Booster Project vote (see Engagement Summary) (*).

3.1. Permanent enhancement: Construct new bulb-outs on all corners of intersection with curbs, ramps; incorporate placemaking elements and integrate with other neighborhood business district 'gateway' elements. Align with McKinley Streetscape Design (T4).



Intersection safety can be enhanced with painted bulb-outs and plastic bollards to shorten the crossing distance and slow motor vehicles, serving as a short-term "test" before making these permanent. Photo credit: Streetsblog

McKinley Ave Streetscape Enhancement

4. Design and construct streetscape upgrades for McKinley Ave (E Wright Ave to south of E Division Ln), with consideration of the following: (PW)

- 4.1. Expand sidewalk width and/or create bulb-outs (consistent with land use code) to support increased pedestrian density and calm traffic through curb bulb-outs at select intersections, including East Harrison St, East Morton St, and East Division Ln (T3.1).
- 4.2. Accommodate bicycles through infrastructure upgrades.
- 4.3. Deploy parking management tools, e.g. posted time restrictions, loading/unloading zones for deliveries and on-demand uses, and designated ADA parking (T24).
- 4.4. Improve visibility/sight lines at intersections.
- 4.5. Ensure consistent and damage-proof pedestrian-scale lighting.
- 4.6. Add street amenities such as seating, trash cans, trees, and bicycle parking (BV2-5).
- 4.7. Add parklets in key locations.
- 4.8. Develop north and south gateway open spaces (OS3-4).
- 4.9. Include green stormwater infrastructure where possible.
- 4.10. Infuse the street design with new art connected with themes and elements from the Placemaking Strategy (see BV7).
- 4.11. Align with wayfinding strategies (BV13-13.2), including Lushootseed stamps and signs.

McKinley Hill Neighborhood Plan



Opportunities, issues, questions

- 1 Wright Ave. gateway plaza [4.8]
- 2 Coordinate w/34th project—add intersection treatment? [4.11]
- 3 Address drainage with rain garden [4.9]
- 4 Explore extended speed tables and/or curbless segment [4.1-7, 4.9-11]
- 5 Activate edges/ facades/ "missing teeth" [4.10,BV7]
- 6 Celebrate Green Power @ EV
- 7 Parcel access/driveway issues at gateway intersection [4.1,T3.1]
- 8 Safety/speed reduction @ Morton-Division w/intersection redesign [4.1,T3.1]
- 9 Wedge RoWay landscape + big rock [4.7,.10]
- 10 South gateway@ Memorial Park w/Sidewalk café "streeterly" [4.8]

STREETSCAPE ENHANCEMENT

Steps Ahead – this year

- Urban Design Studio + Public Art + MAKERS Consultants
- Coordinate with Public Works/Transportation and Environmental Services/Green Stormwater Infrastructure
 - Spring/Summer:
Design concept updates and input with community
 - Fall:
Advance a design enough to estimate a budget for final design + construction
 - Make budget request
- Looking down the road to 2024-25
 - Final Design and Construction (tbd)

Thank you!

Lauren Hoogkamer, *Principal Planner*
lhoogkamer@cityoftacoma.org

Anneka Olson, *Senior Planner*
aolson@cityoftacoma.org

Sign Up & Learn More
Cityoftacoma.org/NeighborhoodPlanning



RED CURB PAINTING

Walkability Committee:

- Project Limits
 - McKinley Ave
 - Side streets
- Outreach (example to right)
 - Letter/Door hangers
 - Perception of parking loss
- Painting day
 - City staff to oversee painting and to provide materials/equipment
 - Weekend, one day, weather dependent



Dear Community Member,

Recently the 6th Avenue Business District spearheaded a volunteer effort to increase the safety of pedestrians, bicyclists and drivers within the district by refreshing the painting of the curbs in no parking areas red. Painting the curbs red makes existing NO PARKING areas more visible to parkers and makes it easier to understand where a vehicle can legally and safely park.

Red curbs = No stopping, standing, or parking.

Where?

In various segments along 6th Ave from N Alder St to State Street, both sides.



Why?

- ⇒ Improves the safety for ALL users of the right of way (streets and sidewalks).
- ⇒ Promotes good parking behaviors through stronger visual cues of NO PARKING areas
- ⇒ Improves usability of our streets and sidewalks for everybody by enhancing sight lines and establishing buffers for our more vulnerable users.
- ⇒ Reduces the number of potential infractions. State law prohibits parking in these areas already, painting the curbs red will help would be parkers make better and more informed decisions.

More info?

For more details on this project, please contact the 6th Ave Business District at:

ON6THAVETACOMA@GMAIL.COM

If you are a resident of the area, this project may increase parking pressures in your neighborhood. We recommend checking out CITYOFTACOMA.ORG/RESIDENTIALPARKINGPROGRAM for more info on options to enhance the livability of your neighborhood.

MCKINLEY NEIGHBORHOOD PLAN

- **Community-identified goals:**
 - **Business district vitality**—a strong business district with McKinley's unique sense of place, public art, and amenities for all ages.
 - **Transportation**—to have safe, accessible connections in and out of the neighborhood for people walking, rolling, biking, and on transit.
 - **Open space**—to have abundant, active, and well-maintained greenery and public spaces that contribute to neighborhood identity.
 - **Development**—growth that adds options for food, housing, services, and amenities in the neighborhood.

