



City of Tacoma

Environmental Services / Science & Engineering

ADDENDUM NO. 3

DATE: 01/20/2026

**REVISIONS TO:
RFB Specification No. ES25-0195F
Central Treatment Plant Building A Renovations**

NOTICE TO ALL Respondents:

This addendum is issued to clarify, revise, add to or delete from, the original specification documents for the above project. This addendum, as integrated with the original specification documents, shall form the specification documents. The noted revisions shall take precedence over previously issued specification documents and shall become part of this contract.

REVISIONS TO THE TECHNICAL SPECIFICATIONS:

Change No. 01 – Add Section 01 60 00 Product Requirements

Change No. 02 - Revision to Section 03 30 00, Paragraph 2.07A

Remove Item 1 and replace it with SILPRO products SILFLO 230 and RAECO R-100.

Change No. 03 - Delete Section 03 35 20 Concrete Polishing.

Change No. 04 – Revision to Section 09 29 00, Paragraph 2.02

Add the following new item:

- I. Sound Batt Insulation: ASTM C665, 3-1/2 and 5-1/2 inch thickness, preformed fiberglass batt, friction fit, unfaced, widths required for snug, friction fit between framing free of gaps or voids. Product: Owens Corning EcoTouch Sound Attenuation Batts with PureFiber Technology or approved equal.

Change No. 04 – Revision to Section 10 51 00, Paragraph 2.01A

Remove Penco Products, Vanguard Model Single Tier and replace with Penco Products, Invincible II Single Tier.

REVISIONS TO THE PLANS:

Change No. 01 – Revision to Drawing G040

- Removed architectural window film (AF-1) under division 10 – specialties, from the Colors and Materials Schedule
- Added note in Equipment Schedule for E02 to read:
Finish: 822 Regal Blue
- Added note in Equipment Schedule for E03, E04, and E05 to read:
Finish: Dark Finish

Change No. 02 – Revision to Drawing A100

- Floor plan note F02 is revised to read:
Install self-leveling concrete (CONC-1). Refer to detail 10E on sheet A720 at connection of CONC(E) to (CONC-1).



- Removed level floor drain symbol and text from Floor Plan Legend.
- Added Floor Plan Note symbol F02 to Laundry 104 on Floor Plan 10C.
- Removed General Note #4.
- Added General Note #6 to read:
cementitious underlayment shall be applied to new and existing concrete to ensure uniformity of appearance in the finished floor. Self-leveling underlayment shall be used for existing slabs to remain and new slabs where floor is relatively level. Trowelable underlayment shall be used for new concrete slab areas that are sloped to drain.
- Added General Note #7 to read:
new slab areas on floor plan are to be sloped 1/4" per foot to new floor drains as indicated.

Change No.3 – Revision to drawing A130

- Revised finish label in Laundry 104 to read:
CONC-1
- Added sealed concrete hatch (CONC-1) to Laundry 104 on Floor Plan 10C.

Change No.4 – Revision to drawing A140

- Removed level floor drain symbol and text from Floor Plan Legend.
- Removed General Note #4.
- Added General Note #6 to read:
cementitious underlayment shall be applied to new and existing concrete to ensure uniformity of appearance in the finished floor. Self-leveling underlayment shall be used for existing slabs to remain and new slabs where floor is relatively level. trowelable underlayment shall be used for new concrete slab areas that are sloped to drain.
- Added General Note #7 to read:
new slab areas on floor plan are to be sloped 1/4" per foot to new floor drains as indicated.

Change No.5 – Revision to drawing A141

- Removed level floor drain symbol and text from Floor Plan Legend.
- Removed General Note #4.
- Added General Note #6 to read:
cementitious underlayment shall be applied to new and existing concrete to ensure uniformity of appearance in the finished floor. self-leveling underlayment shall be used for existing slabs to remain and new slabs where floor is relatively level. trowelable underlayment shall be used for new concrete slab areas that are sloped to drain.
- Added General Note #7 to read:
new slab areas on floor plan are to be sloped 1/4" per foot to new floor drains as indicated.

Change No.6 – Revision to drawing A200

- Revised floor material in Laundry to read:
CONC



City of Tacoma

Change No.7 – Revision to drawing A720

- Deleted detail 7G.
- Added detail 10E
- E001: Revised electrical legend.
- E301: Revised locations of HP-1A and HP-3A in coordination with Mechanical.
- E501: Added 30-day metering load calculations, and revised mechanical equipment connection schedule in coordination with Mechanical.
- E502: Revised panel 'A' and 'C' in coordination with Mechanical and 30-day metering.

NOTE: Acknowledge receipt of this addendum by initialing the corresponding space as indicated on the signature/proposal page. Vendors who have already submitted their bid/proposal may contact the Purchasing Division at 253-502-8468 and request return of their bid/proposal for acknowledgment and re-submittal. Or, a letter acknowledging receipt of this addendum may be submitted in an envelope marked RFB Specification No. ES25-0195F Addendum No. 03. The City reserves the right to reject any and all bids, including, in certain circumstances, for failure to appropriately acknowledge this addendum.

cc: Hilary Bedard/Environmental Services

SECTION 01_60_00
PRODUCT REQUIREMENTS

PART 1 GENERAL

1.01 SUMMARY

- A. Section includes: Product requirements; product selection; product options and substitutions; quality assurance; delivery, handling, and storage; and manufacturer's instructions.

1.02 DEFINITIONS

- A. Execution: Inclusive of performance, workmanship, installation, erection, application, field fabrication, field quality control, and protection of installed products.
- B. Products: Inclusive of material, equipment, systems, shop fabrications, mixing, source quality control.

1.03 PRODUCT REQUIREMENTS

- A. Comply with Specifications and referenced standards as minimum requirements.
- B. Provide products by same manufacturer when products are of similar nature, unless otherwise specified.
- C. Provide identical products when products are required in quantity.
- D. Provide products with interchangeable parts whenever possible.
- E. Require each equipment manufacturer to have maintenance facilities meeting the following requirements and submit to Owner:
 - 1. Minimum 3 years operational experience.
 - 2. Location in continental United States.
 - 3. Equipment and tools capable of making repairs.
 - 4. Staff qualified to make repairs.
 - 5. Inventory of maintenance spare parts.
- F. If conflicts or discrepancies are found within the specifications, the greater or more strict requirement will apply.

1.04 PRODUCT SELECTION

- A. When products are specified by standard or specification designations of technical societies, organizations, or associations only, provide products that meet or exceed reference standard and Specifications.
- B. When products are specified with names of manufacturers but no model numbers or catalog designations, provide:

1. Products by one of named manufacturers that meet or exceed Specifications.
 2. Accepted or approved equal.
- C. When products are specified with names of manufacturers and model numbers or catalog designations, provide:
1. Products with model numbers or catalog designations by one of named manufacturers.
 2. Accepted or approved equal.
- D. When products are specified with names of manufacturers, but with brand or trade names, model numbers, or catalog designations by one manufacturer only, provide:
1. Products specified by brand or trade name, model number, or catalog designation.
 2. Products by one of named manufacturers proven in accordance with requirements for or approved equals to meet or exceed quality, appearance and performance of specified brand or trade name, model number, or catalog designation.
 3. Accepted or approved equal.
- E. When Products are specified with only one manufacturer followed by "or Approved Equal," provide:
1. Products meeting or exceeding Specifications by specified manufacturer.
 2. Accepted or approved equal.

1.05 PRODUCT OPTIONS AND SUBSTITUTIONS

- A. In accordance with Document 00_73_00.
- B. General: Whenever a product is specified using a name of a particular manufacturer or supplier, the specific item cited shall be understood as establishing type, function, dimension, appearance, and quality desired.
- C. Formal substitution request procedure:
1. Submit a written formal Substitution Request Form to Owner for each proposed substitution within 7 days following the effective date of the Notice to Proceed.
 2. Owner will return initial opinion and request for additional information within 14 days.
 3. Owner will notify Contractor in writing of decision to accept or reject the substitution request within 14 days of receiving required information.
- D. Formal substitution request contents:
1. Manufacturer's literature including:
 - a. Manufacturer's name and address.
 - b. Product name.
 - c. Product description.
 - d. Reference standards.
 - e. Certified performance and test data.
 - f. Operation and maintenance data.
 2. Samples, if applicable.
 3. Shop drawings, if applicable.
 4. Reference projects where the product has been successfully used:
 - a. Name and address of project.

- b. Point of contact name and phone number.
 - 5. Itemized comparison of the proposed substitution with product specified including a list of significant variations:
 - a. Design features.
 - b. Design dimensions.
 - c. Installation requirements.
 - d. Operations and maintenance requirements.
 - 6. Define impacts:
 - a. Impacts to construction schedule.
 - b. Impacts to other contracts.
 - c. Impacts to other work or products.
 - d. Impact to Contract Sum:
 - 1) Do not include costs under separate contracts.
 - 2) Do not include Engineer's costs for redesign or revision of Contract Documents.
 - 3) Required license fees or royalties.
 - e. Availability of maintenance services and sources of replacement materials.
 - 7. Contractor represents the following:
 - a. Contractor bears the burden of proof of the equivalency of the proposed substitution.
 - b. Proposed substitution does not change the design intent and will have equal performance to the specified product.
 - c. Proposed substitution meets all contract requirements and will not impact other work or products contained in the Contract Documents.
 - d. Proposed substitution is equal or superior to the specified product.
 - e. Contractor will provide the warranties or bonds that would be provided on the specified product on the proposed substitution.
 - f. Contractor will coordinate installation of accepted substitution into the Work and will be responsible for the costs to make changes as required to the Work.
 - g. Contractor waives rights to claim additional costs caused by proposed substitution which may subsequently become apparent.
 - h. Contractor certifies proposed substitution will have no downstream effect on the project.
 - i. Proposed substitution will not require a time extension to the schedule.
- E. Substitutions will not be considered for acceptance under the following conditions:
 - 1. No formal substitution request is made.
 - 2. The substitution is simply implied or indicated on shop drawings or product data submittals.
 - 3. The formal substitution request is submitted by a subcontractor or supplier.
- F. Substitution requests submitted after the deadline will not be considered unless the following evidence is submitted to the Owner:
 - 1. Proof that the specified product is unavailable for reasons beyond the control of the Contractor or for the Owner's Benefit, as defined in Documents 00_72_00 and 00_73_00. Poor planning or scheduling by the Contractor to procure materials shall not justify a substitution request.
- G. Owner's decision on a substitution requests will be final and binding:

1. Accepted substitutions will be incorporated into the Contract Documents with a Change Order.
2. Requests for time extensions and additional costs based on submission of, acceptance of, or rejection of substitutions will not be allowed.
3. Owner shall be entitled to the cost of reimbursement from the Contractor for the substitution evaluation by the Engineer whether or not substitution is approved.

1.06 QUALITY ASSURANCE

- A. Inspect conditions before executing subsequent portions of the Work. Accept responsibility for correcting unsatisfactory conditions prior to executing subsequent portions of the Work.
- B. Secure products in place with positive anchorage devices designed and sized to withstand stresses, vibration, and racking.

1.07 DELIVERY, HANDLING, STORAGE, AND PROTECTION

- A. Prepare products for shipment by:
 1. Tagging or marking products to agree with delivery schedule or shop drawings.
 2. Including complete packing lists and bills of material with each shipment.
 3. Packaging products to facilitate handling and protection against damage during transit, handling, and storage.
 4. Packing shall include Owner's name, Project number, and address.
- B. Transport products by methods that avoid product damage. Deliver products in undamaged condition in manufacturer's unopened containers or packaging.
- C. Provide equipment and personnel to handle products by methods to prevent soiling or damage.
- D. Upon delivery, promptly inspect shipments:
 1. Verify compliance with Contract Documents, correct quantities, and undamaged condition of products.
 2. Immediately store and protect products and materials until installed in Work.
 3. Photograph delivery and acceptance of major items.
 4. Damaged material shall be rejected with no additional time or cost provided.
- E. Furnish covered, weather-protected storage structures providing a clean, dry, noncorrosive environment for all mechanical equipment, valves, architectural items, electrical and instrumentation equipment and special equipment to be incorporated into this project:
 1. Storage of equipment shall be in strict accordance with the "instructions for storage" of each equipment supplier and manufacturer including connection of heaters, placing of storage lubricants in equipment, etc.
 2. The Contractor shall furnish a copy of the manufacturer's instructions for storage to the Owner prior to storage of all equipment and materials.
 3. Corroded, damaged, or deteriorated equipment and parts shall be replaced before acceptance of the project.
 4. The Owner will not authorize payment for equipment and materials that are not properly stored.

- F. Store products with seals and legible labels intact.
- G. Store moisture sensitive products in weathertight enclosures.
- H. Maintain products within temperature and humidity ranges required or recommended by manufacturer.
- I. Maintain storage areas at ambient temperatures recommended by manufacturer.
- J. Protect painted surfaces against impact, abrasion, discoloration, and other damage. Repaint damaged painted surfaces.
- K. Exterior storage of fabricated products:
 - 1. Place on aboveground supports that allow for drainage.
 - 2. Cover products subject to deterioration with impervious sheet covering.
 - 3. Provide ventilation to prevent condensation under covering.
- L. Provide access for inspection.
- M. Maintain equipment per the manufacturer's recommendation and industry standards, including oil changes, rotation, etc. Provide a log of equipment maintenance to the Owner on a monthly basis:
 - 1. Rotation log shall include, as a minimum, the equipment identification, date stored, date removed from storage, copy of manufacturer's recommended storage guidelines, date of rotation of equipment, and signature of party performing rotation.
 - 2. Submit sample log for approval.
- N. Protection after installation:
 - 1. Provide substantial protections/coverings as necessary to protect installed products from damage from subsequent construction operations. Provide substantial coverings as necessary to protect partially installed products from damage from weather. Remove covering when no longer needed.

1.08 MANUFACTURER'S INSTRUCTIONS

- A. Deliver, handle, store, install, erect, or apply products in accordance with manufacturer's instructions, Contract Documents, and industry standards.
- B. Periodically inspect to assure products are undamaged and maintained under required conditions.

PART 2 PRODUCTS

2.01 SPARE PARTS AND SPECIAL TOOLS

- A. Contractor shall provide a single spare parts and special tools inventory list for all equipment furnished as required by the Specifications. The list shall include the following information:
 - 1. Equipment tag number.
 - 2. Equipment manufacturer.
 - 3. Subassembly component, if appropriate.

4. Quantity.
 5. Storage location.
- B. Store spare parts, maintenance products, and special tools in enclosed, weather-proof, and lighted facility during the construction period:
1. Contractor is responsible for spare parts and special tools until acceptance by Owner.
 2. Protect parts subject to deterioration, such as ferrous metal items and electrical components with appropriate lubricants, desiccants, or hermetic sealing.
- C. Delivery to Owner: The Contractor shall box, tag, and clearly mark items prior to delivery to Owner in accordance with the following:
1. Large items:
 - a. Weight: Greater than 50 pounds.
 - b. Size: Greater than 24 inches wide by 18 inches high by 36 inches long.
 - c. Stored individually.
 - d. Clearly labeled:
 - 1) Equipment tag number.
 - 2) Equipment manufacturer.
 - 3) Subassembly component, if appropriate.
 2. Smaller items:
 - a. Weight: Less than 50 pounds.
 - b. Size: Less than 24 inches wide by 18 inches high by 36 inches long.
 - c. Stored in spare parts box.
 - d. Clearly labeled:
 - 1) Equipment tag number.
 - 2) Equipment manufacturer.
 - 3) Subassembly component, if appropriate.
 3. Spare parts and special tools box:
 - a. Wooden box:
 - 1) Size: 24 inches wide by 18 inches high by 36 inches long.
 - b. Hinged wooden cover:
 - 1) Strap type hinges.
 - 2) Locking hasp.
 - 3) Spare parts inventory list taped to underside of cover.
 - c. Clearly labeled:
 - 1) The words "Spare Parts and/or Special Tools."
 - 2) Equipment tag number.
 - 3) Equipment manufacturer.

PART 3 EXECUTION

3.01 CLOSEOUT ACTIVITIES

- A. Owner may request advanced delivery of spare parts and special tools:
1. Deduct the delivered items from inventory and provide transmittal documentation.
- B. Immediately prior to the date of Substantial Completion, arrange to deliver spare parts and special tools to Owner at a location on site chosen by the Owner:

1. Provide itemized list of spare parts and special tools that matches the identification tag attached to each item.
2. Owner and Engineer will review the inventory and the itemized list to confirm it is complete and in good condition prior to signing for acceptance.

3.02 ATTACHMENTS

- A. Appendix A - Sample Substitution Request Form.

END OF SECTION



Substitution Request Form

Project: _____ Substitution Request Number: _____

 From: _____
 To: _____ Date: _____

 Engineer Project Number: _____
 Re: _____ Contract For: _____

Specification Title: _____ Description: _____
 Section: _____ Page: _____ Article/Paragraph: _____

Proposed Substitution: _____
 Manufacturer: _____ Address: _____ Phone: _____
 Trade Name: _____ Model No.: _____
 Installer: _____ Address: _____ Phone: _____
 History: New product 2-5 years old 5-10 yrs old More than 10 years old
 Differences between proposed substitution and specified product: _____

Point-by-point comparative data attached - REQUIRED BY ENGINEER

Reason for not providing specified item: _____

Similar Installation:

Project: _____ Architect: _____
 Address: _____ Owner: _____
 _____ Date Installed: _____

Proposed substitution affects other parts of Work: No Yes; explain _____

Savings to Owner for accepting substitution: _____ (\$ _____).
 Proposed substitution changes Contract Time: No Yes [Add] [Deduct] _____ days.
 When is material required to be on site?: _____

Supporting Data Attached: Drawings Product Data Samples Tests Reports _____

The Undersigned certifies:

- Proposed substitution has been fully investigated and determined to be equal or superior in all respects to specified product.
 - Same warranty will be furnished for proposed substitution as for specified product.
 - Same maintenance service and source of replacement parts, as applicable, is available.
 - Proposed substitution will have no adverse effect on other trades and will not affect or delay progress schedule.
 - Cost and schedule data as stated above is complete. Claims for additional costs or time related to accepted substitution which may subsequently become apparent are to be waived.
 - Proposed substitution does not affect dimensions and functional clearances.
 - Payment will be made for changes to building design, including Engineer design, detailing, and construction costs caused by the substitution.
 - Coordination, installation, and changes in the Work as necessary for accepted substitution will be complete in all respects.
-

Submitted by: _____

Signed by: _____

Firm: _____

Address: _____

Telephone: _____

Attachments: _____

ENGINEER's REVIEW AND ACTION

- Substitution accepted - Make submittals in accordance with Specification Section 01_33_00.
- Substitution accepted as noted - Make submittals in accordance with Specification Section 01_33_00
- Substitution rejected - Use specified materials.
- Substitution Request received too late - Use specified materials.

Signed by:

Date:

Additional Comments: Contractor Subcontractor Supplier Manufacturer Engineer _____

STANDARD ABBREVIATIONS LIST

(D)	DEMOLISH / DEMOLITION	FTD	FACIAL TISSUE DISPENSER	R	RADIUS
(E)	EXISTING	FTG	FOOTING	R.	RISER
(F)	FUTURE	G.A.	GYPSUM ASSOCIATION	R.D.	ROOF DRAIN
(R)	RELOCATE	G.F.C.I.	GOVERNMENT FURNISHED CONTRACTOR INSTALLED	R.L.	ROOF LEADER
(r)	REMOVABLE	G.F.G.I.	GOVERNMENT FURNISHED GOVERNMENT INSTALLED	R.O.	ROUGH OPENING
(S)	SALVAGE	GA	GAUGE	R.O.H.	RIGHT OF WAY
#	AT	GALV	GALVANIZED	RB	RUBBER BASE
A.B.	ANCHOR BOLT	GB	GRAB BAR	RCD	ROLLING COUNTER DOOR
A.F.F.	ABOVE FINISH FLOOR	GC	GENERAL CONTRACTOR	REF	REFRIGERATOR
ABB	ABBREVIATION	GEN	GENERAL	REINF	REINFORCED
ACM	ALUMINUM COMPOSITE MATERIAL	GFRG	GLASS FIBER REINFORCED GYPSUM	REQD	REQUIRED
ACP	ARCHITECTURAL CONCRETE PAVER	GL	GLASS	RF	RUBBER FLOORING
ACT	ACOUSTICAL CEILING TILE	GLB	GLUE LAMINATE BEAM	RLT	RELITE
ADA	AMERICANS WITH DIABILITIES ACT	GSF	GROSS SQUARE FOOTAGE	RPM	RESID PANEL MATERIAL
ADDL	ADDITIONAL	GT	GROUT	RSJ	ROLLING SERVICE DOOR
ADJ	ADJUSTABLE	GMB	GYPSUM WALL BOARD	RTR	RUBBER TREAD RISER
AESS	ARCHITECTURAL EXPOSED STRUCTURAL STEEL	GYP	GYPSUM	RTU	ROOF TOP UNIT
AF	ARCHITECTURAL WINDOW FILM	H.B.	HOSE BIB	S	SOUND
ALUM	ALUMINUM	H.C.	HANDICAPPED	S.D.	SOAP DISPENSER
AP	ACCORDIAN PARTITION	H.D.	HAND DRYER	S.O.G.	SLAB ON GRADE
APC	ARCHITECTURAL POLISHED CONCRETE	HC	HOLLOW CORE	SAE	SLIDING AUTOMATIC ENTRANCE
AS	ASPHALT SHINGLES	HDR	HEADER	SC	SOLID CORE
ASMB	ASSEMBLY	HDW	HARDWARE	SCH	SCHEDULE
AMF	ACOUSTICAL WALL FABRIC	HK	HOOK	SCR	SHOWER CURTAIN ROD
AMP	ARCHITECTURAL WALL PANEL	HLB	HORIZONTAL LOUVER BLINDS	SD	SECTIONAL DOORS
B	BOLLARD	H1	HOLLOW METAL	SDG	SIDING
B.O.F.	BOTTOM OF FOOTING	HMS	HORIZONTAL METAL SIDING	SDT	STATIC DISSIPATED TILE
BB	BACKERBOARD	HR	HORIZONTAL	SE	SQUARE FOOT
BB	BOARD	HR	HORIZONTAL	SFS	STORAGE/TOP SYSTEM
BF	BRACED FRAME	HSD	HAND SANITIZER DISPENSER	SG	SAFETY GLASS
BLDG	BUILDING	HGRD	HIGH SPEED ROLLING DOOR	SGS	SECURITY GRILLE SYSTEM
BLKG	BLOCKING	HT	HEIGHT	SH	SOAP HOLDER
BM	BEAM	HWD	HARDWOOD	SHC	SHOWER CURTAIN
BN	BIRD NETTING	ID.	INSIDE DIAMETER	SHS	FOLDING SHOWER SEAT
BOT	BOTTOM	IMP	INSULATED METAL PANEL	SHT	SHEET
BRT	BEARING	INT	INTERIOR	SHTG	SHEATHING
BRK	BRICK MASONRY UNIT	IRGMB	IMPACT RESISTANT GYPSUM WALL BOARD	SM	SIMILAR
BTWN	BETWEEN	ISO	POLYISOCYANURATE RIGID INSULATION	SJ	SEISMIC JOINT
C	COMPACT	JAN	JANITOR	SLR	SEALER
C.I.	CONTINUOUS INSULATION	JST	JOIST	SLS	SKYLIGHT SYSTEM
C.J.	CONTROL JOINT	JT	JOINT	SMU	STONE MASONRY UNIT
C.O.S.	CENTER OF STRUCTURE	LAM	LAMINATE	SND	SANITARY NAPKIN DISPENSER
CAB	CABINET	LAV	LAVATORY	SNR	SANITARY NAPKIN RECEPTACLE
CB	COVE BASE	LBR	LUMBER	SNTD	SANITARY NAPKIN AND TAMPON DISPENSER
CBB	CEMENTITIOUS BACKER BOARD	LBS	POUNDS (WEIGHT)	SPEC	SPECIFICATIONS
CBD	CHALKBOARD	LG	LAMINATED GLASS	SPGL	SPANDREL GLASS
CER	CERAMIC	LN	LINOLEUM	SPMR	SINGLE-PLY MEMBRANE ROOFING
CG	CORNER GUARD	LP	LIGHT POLE	SQ	SQUARE
CH	COAT HOOK	LVP	LUXURY VINYL PLANK FLOORING	SS	STAINLESS STEEL
CHRL	CHAR RAIL	LVR	LUXURY	SM	SOLID SURFACE MATERIAL
CLG	CEILING	LVT	LUXURY VINYL TILE	SSMR	STANDING SEAM METAL ROOFING
CLK	CLINKER TILE	M	MORTAR	SSS	STAINLESS STEEL SHELF
CLR	CLEAR	M-R	MOLD RESISTANT	ST	STONE
CMU	CONCRETE MASONRY UNIT	MAS	MASONRY	STD	STANDARD
COL	COLUMN	MAT	MATERIAL	STL	STEEL
CONC	CONCRETE	MAX	MAXIMUM	STN	STAIN
CONST	CONSTRUCTION	MB	MARKERBOARD	SV	SHEET VINYL
CONT	CONTIGUOUS	MC	MEDICINE CABINET	T	TONGUE AND GROOVE
COORD	COORDINATE	MCP	METAL CEILING PANELS	T.G.	TONGUE AND GROOVE
CPT	CARPET	MDF	MEDIUM DENSITY FIBERBOARD	T.B.	TOWEL BAR
CU	CUBIC	MECH	MECHANICAL	T.I.	TENANT IMPROVEMENT
CV	COVER	MEP	MECHANICAL, ELECTRICAL, PLUMBING	T.O.	TOP OF
CMS	CURTAIN WALL SYSTEM	MES	MECHANICAL EQUIPMENT SCREEN	T.O.B.	TOP OF BEARING
D	DEPTH	MF	METAL FABRICATIONS	T.O.F.	TOP OF FLOOR
D.F.	DRAINING FOUNTAIN	MFR	MANUFACTURER	T.O.W.	TOP OF WALL
D.S.	DOWNSPOUT	MFW	MOVEABLE FIRE WALL	T.S.C.D.	TOILET SEAT COVER DISPENSER
DBL	DOUBLE	MIN	MINIMUM	TB	TACKBOARD
DFT	DRAFTING	MIN	MINUTE	TBB	TILE BACKERBOARD
DIA	DIAMETER	MIR	MIRROR	TC	TOILET COMPARTMENTS
DM	DECORATIVE METAL	MISC	MISCELLANEOUS	TCP	TILT-UP CONCRETE PANEL
DPL	DECORATIVE METAL LAMINATE	MV	MANUFACTURED MASONRY VENEER	TD	TRAFFIC DOOR
DN	DOWN	MRP	MOISTURE RESISTANT METAL ROOFING PANEL	TEMP	TEMPORARY
DR	DOOR	MRS	METAL RAILING SYSTEM	TR	TRANSFORMER
DTL	DETAIL	MS	MANUFACTURED SIDING	THK	THICK
DN	DISHWASHER	MSP	METAL SOFFIT PANEL	THML	THERMAL
E.F.	EXHAUST FAN	MSS	METAL STAIR SYSTEM	TL	TILE
E.P.	ELECTRICAL PANEL	MTL	METAL	TPD	TOILET PAPER DISPENSER
EA	EACH	MV	MASONRY VENEER	TR	TRANSITION
E.F.S	EPOXY FLOORING	MW	METAL WALL PANEL	TRTD	TREATED
EJ	EXPANSION JOINT	N.C.	NOT IN CONTRACT	TRZ	TERRAZO
EJC	EXPANSION JOINT COVER	N.T.S.	NOT TO SCALE	TS	TUBE STEEL
EL	ELEVATION	N/A	NOT APPLICABLE	TFW	TACKABLE WALL FABRIC
ELECT	ELECTRICAL	NO.	NUMBER	TYP	TYPICAL
ELEV	ELEVATOR	NOM	NOMINAL	UN.O.	UNLESS NOTED OTHERWISE
ENV	ENVELOPE	NSH	NATURAL STONE MATERIAL	UNFN	UNFINISHED
EPS	EXPANDED POLYSTYRENE RIGID INSULATION	NTD	NAPKIN-TAMPON DISPENSER	VB	VAPOR BARRIER
EQ	EQUAL	NTS	NOTES	VCT	VINYL COMPOSITION TILE
EQUIP	EQUIPMENT	O.C.	ON CENTER	VERT	VERTICAL
EXP	EXPANSION	O.D.	OUTSIDE DIAMETER	VMS	VERTICAL METAL SIDING
EXT	EXTERIOR	O.H.	OVERHEAD	VP	VENEER PLASTER
F.D.	FLOOR DRAIN	OR.D.	OVERFLOW ROOF DRAIN	W	WIDTH
F.E.	FIRE EXTINGUISHER	OR.L.	OVERFLOW ROOF LEADER	W.C.	WATER CLOSET
FF	FINISH FLOOR	O.S.	OVERFLOW SCUPPER	W.F.	WELDED WIRE FABRIC
F.H.	FIRE HYDRANT	OPNG	OPENING	W	WITH
F.I.C.	FURNISHED AND INSTALLED BY CONTRACTOR	OPP	OPPOSITE	W/O	WITHOUT
F.I.O.	FURNISHED AND INSTALLED BY OWNER	OSB	ORIENTED STRAND BOARD	WAN	WANSICOT
F.O.I.C.	FURNISHED BY OWNER INSTALLED BY CONTRACTOR	OZ	OUNCE	WB	WHITEBOARD
F.O.S.	FACE OF STRUCTURE	P.A.F.	POWER ACTUATED FASTENER	WC	WALL COVERING
F.P.	FLAG POLE	P.T.	PRESSURE TREATED	WD	WOOD
FOUND	FOUNDATION	P.C.	PRECAST ARCHITECTURAL CONCRETE	WF	WOOD FLOORING
FF	FACTORY FINISH	P.C.S.	PRECAST CONCRETE STUCCO	WG	WIRE GLASS
FH	FULL HEIGHT	P.CSU	PRECAST CONCRETE SOLID UNIT	WH	WATER HEATER
FIG	FIGURE	PERP	PERPENDICULAR	WIN	WINDOW
FIN	FINISH	PLAM1	PLASTIC LAMINATE	WOM	WALK OFF MAT
FLR	FLOOR	PLY	PLYWOOD	WP	WORK POINT
FP	FIREPROOFING	PP	POWER POLE	WR	WASTE RECEPTACLE
FRC	FIBER REINFORCED CEMENTITIOUS PANEL	PS	PROJECTION SCREEN	WRB	WEATHER RESISTIVE BARRIER
FRL	FIBER REINFORCED LAMINATE	PSG	PLASTER SKY COAT	WRGMB	WATER RESISTANT GYPSUM WALLBOARD
FRMG	FRAMING	PSF	POUND PER SQUARE FOOT	WS	WOOD SIDING
FRP	FIBER REINFORCED PANEL	PSMU	PRECAST STONE MASONRY UNIT	WSEC	WASHINGTON STATE ENERGY CODE
FRSG	FIRE RATED SAFETY GLASS	PT	PAINT	WT	WEIGHT
FRT	FIRE-RETARDANT TREATED	PTD	PAPER TOWEL DISPENSER	WMS	WINDOW WALL SYSTEM
FT	FOOT / FEET	PTDWR	PAPER TOWEL DISPENSER WASTE RECEPTACLE	XPS	EXTRUDED POLYSTYRENE RIGID INSULATION
		QTY	QUANTITY	Y.D.	YARD DRAIN
				ℓ	CENTERLINE

COLORS AND MATERIALS SCHEDULE

SYMBOL	MATERIAL	MANUFACTURER	COLOR / PATTERN / TYPE	LOCATION
DIVISION 3 - CONCRETE				
CONC-1	SELF LEVELING CONCRETE	-	FINISH: SEALED	REFER TO INTERIOR FINISHES PLAN
DIVISION 8 - OPENINGS				
HDW-1	HARDWARE	-	{1}	DOOR HARDWARE
HMF-1	HOLLOW METAL DOOR AND FRAME	-	{PT-C} {2}	
DIVISION 9 - FINISHES				
ACT-1	ACOUSTICAL CEILING TILE	ARMSTRONG	COLOR: WHITE	REFER TO REFLECTED CEILING PLAN
FRP-1	FIBER REINFORCED PANEL	VALTO ENGINEERED MATERIALS	COLOR: SHELTER COVE GRAY 1281	
GT-1	GROUT	MAPEI	COLOR: 5232 NIGHT SKY	USE WITH TL-2 AND TL-3
GT-2	GROUT	MAPEI	COLOR: 5027 SILVER	USE WITH TL-1
PT-A	PAINT	SHERKIN WILLIAMS	COLOR: FLEUR DE SEL 5M7666	GENERAL, CEILING & WALL
PT-B	PAINT	SHERKIN WILLIAMS	COLOR: SMOKY AZURITE 5M9148	REFER TO INTERIOR ELEVATIONS
PT-C	PAINT	SHERKIN WILLIAMS	COLOR: RON ORE 5W7069	HOLLOW METAL DOOR FRAMES
RB-1	RUBBER BASE	JOHNSONITE	COLOR: BURNT UMBER 63	
TL-1	TILE	DAL TILE	COLOR: WHITE 5Y30 MATTE	
TL-2	TILE	EQUIPE	COLOR: BLUE NOTE	
TL-3	TILE	PORTOBELLO	COLOR: CLAY	
TR-1	TRANSITION (FLOORING)	SCHLUTER SYSTEMS	FINISH: BRUSHED STAINLESS STEEL	TILE TO CONCRETE
TR-2	TRANSITION	SCHLUTER SYSTEMS	FINISH: BRUSHED STAINLESS STEEL	TILED EDGES
TR-3	TRANSITION (WALL)	SCHLUTER SYSTEMS	FINISH: BRUSHED STAINLESS STEEL	OUTSIDE CORNERS OF TILED SURFACES
DIVISION 10 - SPECIALTIES				
CG-1	CORNER GUARD	INPRO	COLOR: SATIN STAINLESS STEEL 304	REFER TO INTERIOR FINISHES PLAN
DIVISION 12 - FURNISHINGS				
PLAM-1	PLASTIC LAMINATE	PIONITE	COLOR: SABLE AG021	REFER TO INTERIOR ELEVATIONS
PLAM-2	PLASTIC LAMINATE	WILSONART	COLOR: PENTER BRUSH 4774-60	
SSM-1	SOLID SURFACE MATERIAL	WILSONART	COLOR: ARCTIC DRIFT 924655	REFER TO INTERIOR ELEVATIONS

COLOR AND MATERIALS NOTES

NOTES
{1} MATCH BUILDING STANDARD.
{2} ALL HOLLOW METAL FRAMES TO BE PAINTED, INCLUDING EXISTING FRAMES.
SPECIFICATION NOTES
FOOTNOTES: (A) PAINTING: ALL WORK SHALL BE PREMIUM GRADE IN ACCORDANCE WITH MASTER PAINTERS INSTITUTE (MPI) ARCHITECTURAL PAINTING SPECIFICATIONS MANUALS. (B) MANUFACTURED WOOD CASEWORK: IN ACCORDANCE WITH AHS/AMI PREMIUM GRADE QUALITY STANDARDS.

TOILET ACCESSORIES SCHEDULE

SYM BOL	MATERIAL	MANUFACTURER	MODEL	DESCRIPTION	FINISH	MOUNTING / LOCATION	RESPONSIBILITY
TOILET ACCESSORIES							
TC-1	TOILET COMPARTMENTS	METPAR CORP		POWDER COATED STEEL TOILET COMPARTMENT	FINISH: GREY DAWN 700	FLOOR-MOUNTED, OVERHEAD BRACED SYSTEM	F.I.C.
TPD-1	TOILET PAPER DISPENSER	GEORGIA PACIFIC PRO	56784A	TOILET TISSUE DISPENSER, TWO-ROLL	FINISH: BLACK	SURFACE-MOUNTED	F.O.I.C.
TS-1	TOILET SEAT COVER DISPENSER	BOBRICK	B-221	SEAT-COVER DISPENSER, CLASSIC SERIES	FINISH: SATIN STAINLESS STEEL	SURFACE-MOUNTED	F.I.C.
SNR-1	SANITARY NAPKIN RECEPTACLE	BOBRICK	B-254	SANITARY NAPKIN DISPENSE, CLASSIC SERIES	FINISH: SATIN STAINLESS STEEL	SURFACE-MOUNTED, CONCEALED FASTENERS	F.I.C.
MIR-1	MIRROR	BOBRICK	B-165	CHANNEL FRAME MIRROR, MODEL SIZE: 24"x36"	FINISH: BRIGHT POLISHED STAINLESS STEEL	SURFACE-MOUNTED, CONCEALED FASTENERS	F.I.C.
GB-1	GRAB BARS	BOBRICK	B-6806	STRAIGHT GRAB BARS, 3-PIECE SET.	FINISH: SATIN STAINLESS STEEL	SURFACE-MOUNTED, CONCEALED FASTENERS	F.I.C.
CH-1	COAT HOOK	BOBRICK	B-6827	HAT AND COAT HOOK	FINISH: SATIN STAINLESS STEEL	SURFACE-MOUNTED, CONCEALED FASTENERS	F.I.C.
SD-3	POWDERED SOAP DISPENSER	BRADLEY CORP	6538	MANUAL POWDERED SOAP DISPENSER	FINISH: SATIN STAINLESS STEEL	SURFACE-MOUNTED	F.I.C.
WR-1	WASTE RECEPTACLE	BOBRICK	B-2400	LARGE CAPACITY WASTE RECEPTACLE	FINISH: SATIN STAINLESS STEEL	FLOOR-STANDING	F.I.C.
CH-2	COAT HOOK	BOBRICK	B-232X24	HOOK STRIP	FINISH: SATIN STAINLESS STEEL	SURFACE-MOUNTED, CONCEALED FASTENERS	F.I.C.
SD-1	SOAP DISPENSER	GOJO	2730-12	FOAM SOAP DISPENSER, TFX	FINISH: BLACK	SURFACE-MOUNTED	F.O.I.C.
PTD-1	PAPER TOWEL DISPENSER	GEORGIA PACIFIC PRO	59462A	AUTOMATIC PAPER TOWEL DISPENSER, ENMOTION 10	FINISH: BLACK	SURFACE-MOUNTED	F.O.I.C.
WR-2	WASTE RECEPTACLE	BOBRICK	B-43644	WASTE RECEPTACLE, LINER MATE	FINISH: SATIN STAINLESS STEEL	SEMI-RECESSED	F.I.C.
SCR-1	SHOWER CURTAIN ROD	BOBRICK	B-6047	EXTRA HEAVY-DUTY SHOWER CURTAIN ROD	FINISH: SATIN STAINLESS STEEL	SURFACE-MOUNTED, CONCEALED FASTENERS	F.I.C.
SHS-1	SHOWER SEAT	BOBRICK	B-5191	PHENOLIC FOLDING SHOWER SEAT	FINISH: SHOWER SEAT - SOLID PHENOLIC/ IVORY BRACKET ASSEMBLY - SATIN STAINLESS STEEL	SURFACE-MOUNTED, CONCEALED FASTENERS	F.I.C.
SHC-1	SHOWER CURTAIN	BOBRICK	204-3	VINYL SHOWER CURTAIN, 70"W X 72"H, REQUIRE (12) HOOKS	FINISH: SATIN STAINLESS STEEL	SURFACE-MOUNTED, CONCEALED FASTENERS	F.I.C.
SND-1	SANITARY NAPKIN DISPENSER	BOBRICK	B-370634C	NAPKIN-TAMPON DISPENSER, FREE OPERATION	FINISH: SATIN STAINLESS STEEL	SEMI-RECESSED	F.I.C.
HSD-1	HAND SANITIZER DISPENSER	GOJO	2720-12	TOUCH FREE DISPENSER, PURELL TFX DISPENSER	FINISH: WHITE	SURFACE MOUNTED	F.O.I.C.
SD-2	SOAP DISPENSER	GOJO	8888-06	FOAM SOAP DISPENSER, ADX-12	FINISH: BLACK AND CHROME	SURFACE-MOUNTED	F.O.I.C.
S5S-1	STAINLESS STEEL SHELF	SCHLUTER SYSTEMS	SMS1 D7 EB	WALL SHELF, SHELF-W, PURE PATTERN	FINISH: BRUSHED STAINLESS STEEL	INSTALLATION WHILE TILING	F.I.C.
MIR-2	MIRROR	BOBRICK	B-165	CHANNEL FRAME MIRROR, MODEL SIZE: 24"x60"	FINISH: BRIGHT POLISHED STAINLESS STEEL	SURFACE-MOUNTED, CONCEALED FASTENERS.	F.I.C.

EQUIPMENT SCHEDULE

SYMBOL	QUANTITY	DESCRIPTION	MANUFACTURER	RESPONSIBILITY	NOTES
E01	14	72"L X 18" DEEP ALUMINUM WALL MOUNTING COAT RACK	ULINE	F.O.I.C.	
E02	80	24"D X 24"W X 72"H SINGLE LOCKER	PENCO	F.I.C.	FINISH: 822 REGAL BLUE
E03	7	10"D X 60"W WOOD BENCH	SALSBURY INDUSTRIES	F.O.I.C.	FINISH: DARK FINISH
E04	3	10"D X 36"W WOOD BENCH	SALSBURY INDUSTRIES	F.O.I.C.	FINISH: DARK FINISH
E05	3	10"D X 48"W WOOD BENCH	SALSBURY INDUSTRIES	F.O.I.C.	FINISH: DARK FINISH
E06	2	COMMERCIAL STACKED WASHER/ DRYER COMBO	OWNER TO VERIFY	F.O.I.C.	
E07	3	24" X 24" X 78" LAUNDRY LOCK UP	CINTAS	F.O.I.C.	
E08	3	18" X 18" X 34" LINEN BAG RACK	CINTAS	F.O.I.C.	
E09	12	48"L X 18" DEEP ALUMINUM WALL MOUNTING COAT RACK	ULINE	F.O.I.C.	
E10	2	24" X 18" DEEP ALUMINUM WALL MOUNTING COAT RACK	ULINE	F.O.I.C.	



COLORS AND MATERIALS SCHEDULE

CENTRAL TREATMENT PLANT BLDG A RENOVATIONS

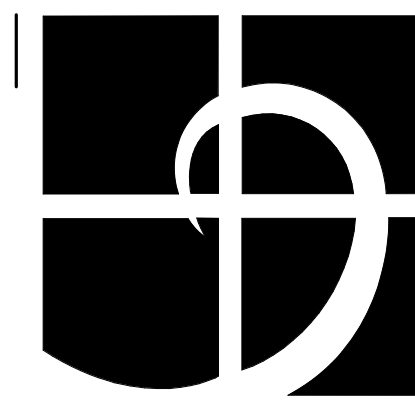
TACOMA, WASHINGTON
 REVISION 1 DATE 01/16/26
 ADDENDUM NO. 3

DATE 12.19.25 JOB NO. 2240018890
 PERMIT / BID SET

G040

WHITE DRAWING NO.
 © All rights reserved. No part of this document may be reproduced in any form or by any means without permission in writing from Helix Design Group a Division of Shive-Hattery.

PLOTTED: 1/16/2026 4:38:38 PM
 FILE PATH: A:\040\0890 - CENTRAL TREATMENT PLANT - Central Treatment Locker Room Remodel.rvt



Helix design group
A DIVISION OF SHIVE-HATTERY



AMERICAN INSTITUTE OF ARCHITECTS

FLOOR PLAN

CENTRAL TREATMENT PLANT BLDG A RENOVATIONS

TACOMA, WASHINGTON
REVISION NO. 3 DATE 01.16.26

DATE 12.19.25 JOB NO. 2240018890
PERMIT / BID SET

A100

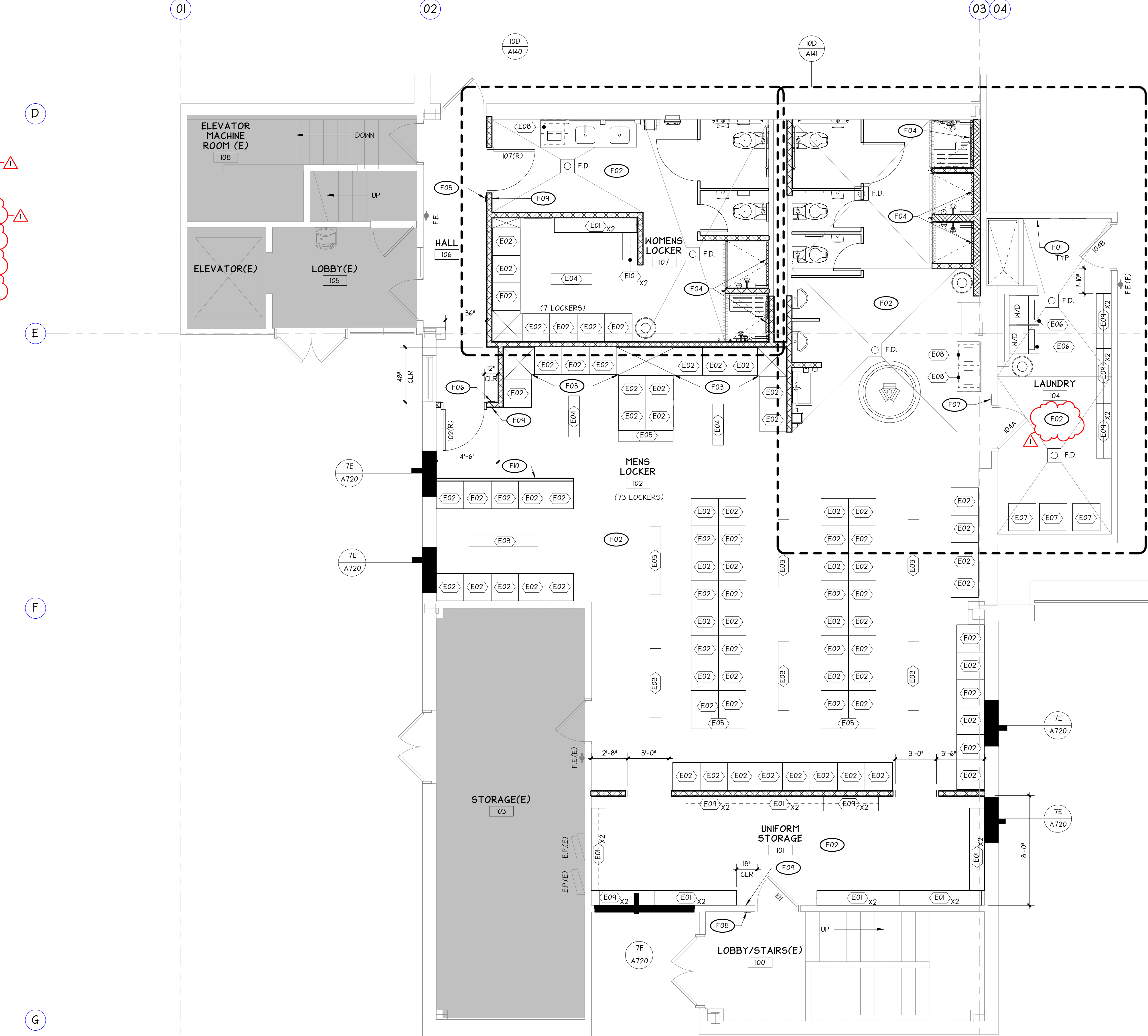
WHITE DRAWING NO.
© All rights reserved. No part of this document may be reproduced in any form or by any means without permission in writing from Helix Design Group, a division of Shive-Hattery.

FLOOR PLAN LEGEND	
DESCRIPTION	SYMBOL AND TEXT
ROOM IDENTIFICATION room name room number	ROOM NAME 100
SWINGING DOOR door number, minimum door strike side clearance distances	
STRUCTURAL COLUMN existing structural column	
FLOOR DRAIN sloped floor drain	
WALL MOUNTED FIRE EXTINGUISHER fire extinguisher and wall bracket at fire rated walls	
EQUIPMENT TAG specialty equipment tag, refer to equipment schedule on sheet G040	
OWNER OCCUPIED AREA area out of scope	

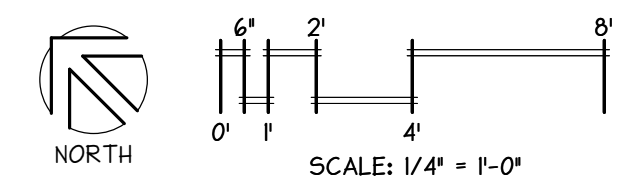
WALL TYPES	
DESCRIPTION	SYMBOL AND TEXT
WALL TYPE 1 2x4 WOOD STUDS @ 16" O.C.	
WALL TYPE 2 2x6 WOOD STUDS @ 16" O.C.	
WALL TYPE 3 EXISTING WALL TO REMAIN	

FLOOR PLAN NOTES	
SYMBOL	NOTE
(F01)	PROVIDE BACKING FOR WALL MOUNTED COAT HOOK RACK, TYPICAL
(F02)	INSTALL CONCRETE (CONC-1). REFER TO DETAIL 10E ON SHEET A720 AT CONNECTION OF CONC(E) TO (CONC-1)
(F03)	LOCKER MANUFACTURER TO PROVIDE VERTICAL FILLERS AT LOCKER RUN ENDS AND INSIDE CORNER CONDITIONS.
(F04)	INSTALL LINEAR SHOWER DRAIN.
(F05)	RESTROOM PLAQUE SIGN 'WOMEN'S LOCKER' WITH ACCESSIBLE SYMBOL.
(F06)	RESTROOM PLAQUE SIGN 'MEN'S LOCKER' WITH ACCESSIBLE SYMBOL.
(F07)	PLAQUE SIGN 'LAUNDRY/ MUD ROOM'.
(F08)	PLAQUE SIGN 'UNIFORM STORAGE'.
(F09)	TACTILE EXIT SIGN.
(F10)	PLASTIC LAMINATE ON PLYWOOD PANEL, (PLAM-2). REFER TO DETAIL 3F ON SHEET A720.

GENERAL NOTES	
NOTE	
1. ABBREVIATIONS: (D) - DEMOLITION (R) - RELOCATE (E) - EXISTING TO REMAIN (S) - SALVAGE	
2. REFER TO SHEET G040 FOR STANDARD ABBREVIATIONS LIST.	
3. INSTALL SOUND BATT INSULATION AT ALL INTERIOR (STUD) WALLS.	
4. PROVIDE TUBE STEEL COLUMN SUPPORT AT ALL PARTIAL HEIGHT WALLS.	
5. CERMENTIOUS UNDERLAYMENT SHALL BE APPLIED TO NEW AND EXISTING CONCRETE TO ENSURE UNIFORMITY OF APPEARANCE IN THE FINISHED FLOOR. SELF-LEVELING UNDERLAYMENT SHALL BE USED FOR EXISTING SLABS TO REMAIN AND NEW SLABS WHERE FLOOR IS RELATIVELY LEVEL. TROWELABLE UNDERLAYMENT SHALL BE USED FOR NEW CONCRETE SLAB AREAS THAT ARE SLOPED TO DRAIN.	
6. NEW SLAB AREAS ON FLOOR PLAN ARE TO BE SLOPED 1/4" PER FOOT TO NEW FLOOR DRAINS AS INDICATED.	



100 FLOOR PLAN
1/4" = 1'-0"



PROJECT: 1/6/2026 6:38 PM - CENTRAL TREATMENT PLANT
FILE PATH: A:\00000000\2240008890\Central Treatment Locker Room Remodel.rvt

FINISHES LEGEND

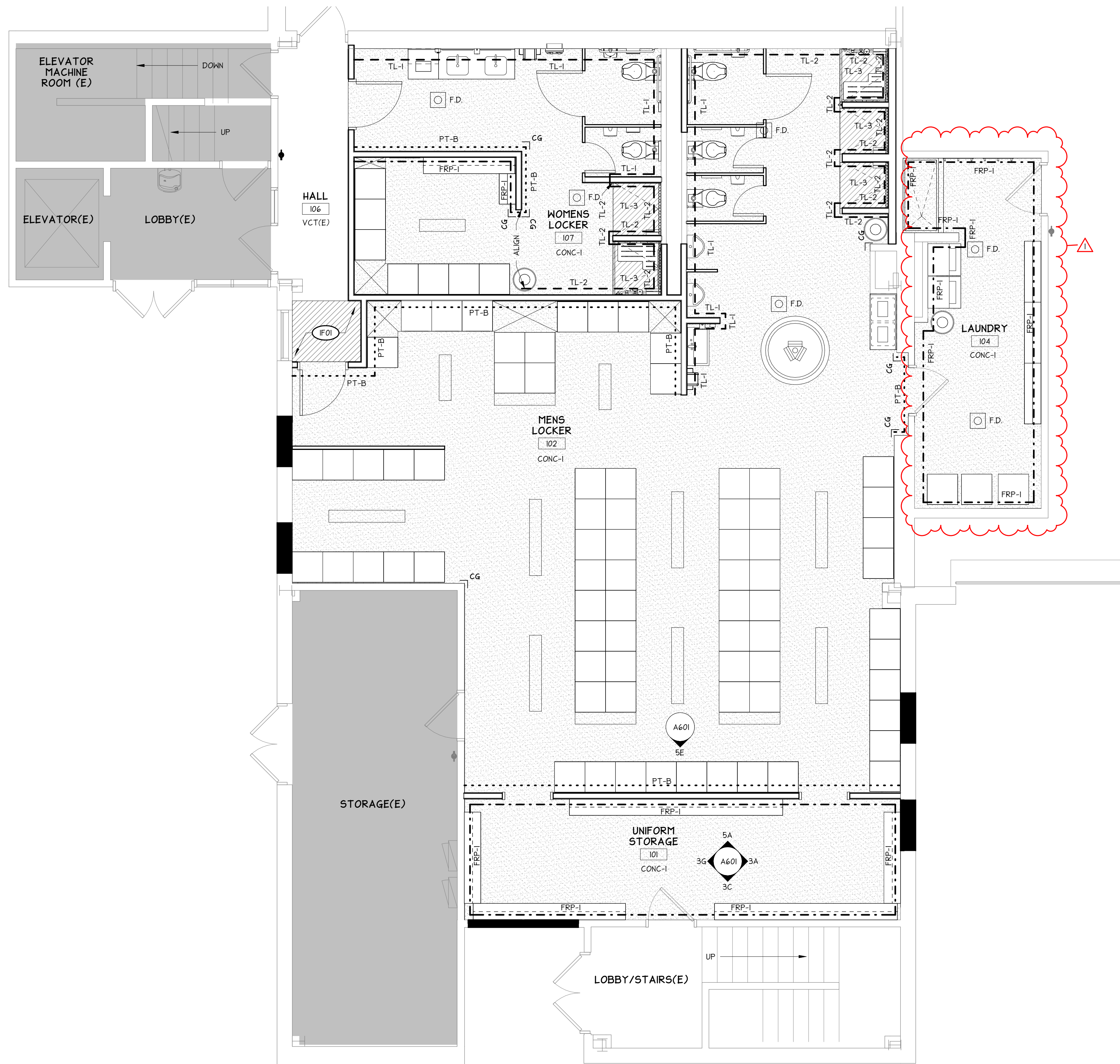
DESCRIPTION	SYMBOL AND TEXT
FLOORING MATERIAL CHANGE	
transition line, flooring type	VCT ← CPT
CORNER GUARD	
stainless steel corner guard	CG
FIBER REINFORCED PANEL	
fiber reinforced panel, type FRP-1	FRP-1
ACCENT WALL	
gab wall finish, painted accent wall color type PT-1	PT-1
TILE	
wall tile, type TL-1	TL-1
ARCHITECTURAL WINDOW FILM	
architectural window film, type AF-1	AF-1
TILE	
floor tile, type TL-X	TL-3
SEALED CONCRETE	
sealed concrete, type CONC-1	CONC-1
OWNER OCCUPIED AREA	
area not in scope	

GENERAL NOTES

- NOTE
- ABBREVIATIONS:
(D) - DEMOLITION
(R) - RELOCATE
(E) - EXISTING TO REMAIN
(S) - SALVAGE
 - REFER TO SHEET G040 FOR STANDARD ABBREVIATIONS LIST.
 - INSTALL TRANSITION EDGE STRIPS AT TRANSITIONS BETWEEN FLOORING TYPES AND SURFACES. REFER TO COLORS AND MATERIALS SCHEDULE FOR TYPICAL FLOORING TRANSITIONS.

FINISHES PLAN NOTES

SYMBOL	NOTE
(F01)	PATCH FLOOR FINISH TO MATCH EXISTING ADJACENT VINYL COMPOSITION TILE FLOORING.



INTERIOR FINISHES PLAN

CENTRAL TREATMENT PLANT BLDG A RENOVATIONS

REVISION	DATE
1	ADDENDUM NO.3 01.16.26

DATE	JOB NO.
12.19.25	2240018890

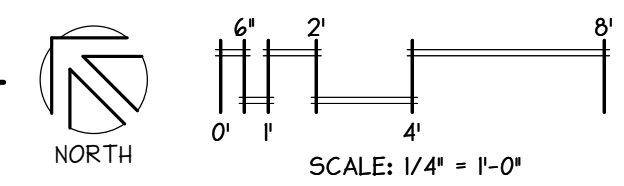
A130

WHITE
DRAWING NO.
© All rights reserved. No part of this document may be reproduced in any form or by any means without permission in writing from Helix Design Group a Division of Shive-Hattery.

PLOTTED: 1/6/2026 6:38 PM PROJECT: 2240018890 - CENTRAL TREATMENT PLANT
 FILE PATH: A:\edek Doss\2240018890 Central Treatment Locker Room Remodel.rvt

100 INTERIOR FINISHES PLAN

1/4" = 1'-0"



A | B | C | D | E | F | G | H | J | K

1 | 2 | 3 | 4 | 5 | 6 | 7 | 8 | 9 | 10

FLOOR PLAN LEGEND

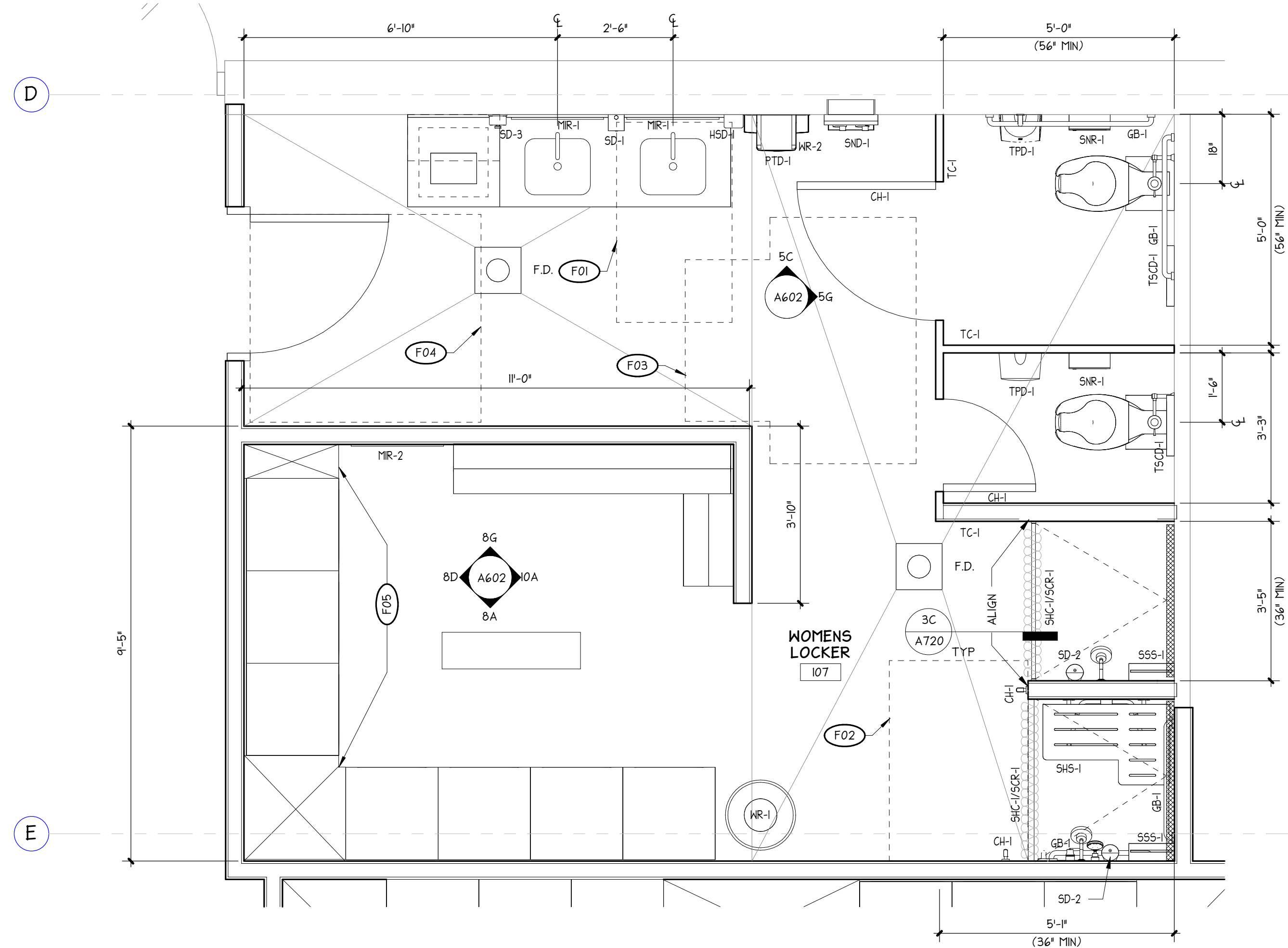
DESCRIPTION	SYMBOL AND TEXT
ROOM IDENTIFICATION room name room number	ROOM NAME 100
SWINGING DOOR door number, minimum door strike side clearance distances	
FLOOR DRAIN sloped floor	
STRUCTURAL COLUMN centered on grid line, centered in wall	

GENERAL NOTES

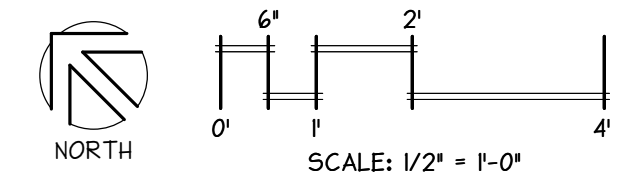
- NOTE
- ABBREVIATIONS:
(D) - DEMOLITION
(R) - RELOCATE
(E) - EXISTING TO REMAIN
(S) - SALVAGE
 - REFER TO SHEET 6040 FOR STANDARD ABBREVIATIONS LIST.
 - INSTALL SOUND BATT INSULATION AT ALL INTERIOR (STUD) WALLS.
 -
 - PROVIDE TUBE STEEL COLUMN SUPPORT AT ALL PARTIAL-HEIGHT WALLS.
 - CEMENTITIOUS UNDERLAYMENT SHALL BE APPLIED TO NEW AND EXISTING CONCRETE TO ENSURE UNIFORMITY OF APPEARANCE IN THE FINISHED FLOOR. SELF-LEVELING UNDERLAYMENT SHALL BE USED FOR EXISTING SLABS TO REMAIN AND NEW SLABS WHERE FLOOR IS RELATIVELY LEVEL. TROWELABLE UNDERLAYMENT SHALL BE USED FOR NEW CONCRETE SLAB AREAS THAT ARE SLOPED TO DRAIN.
 - NEW SLAB AREAS ON FLOOR PLAN ARE TO BE SLOPED 1/4" PER FOOT TO NEW FLOOR DRAINS AS INDICATED.

FLOOR PLAN NOTES

SYMBOL	NOTE
	30" x 52" MINIMUM FORWARD CLEARANCE AT SINK.
	36" x 52" MINIMUM CLEAR FLOOR SPACE AT ADA SHOWER.
	T-SHAPED TURNING SPACE.
	54" x 60" MINIMUM CLEARANCE AT DOOR, FORWARD APPROACH, PULL SIDE.
	LOCKER MANUFACTURER TO PROVIDE VERTICAL FILLERS AT LOCKER RUN ENDS AND INSIDE CORNER CONDITIONS.



100 ENLARGED FLOOR PLAN - WOMENS 103
1/2" = 1'-0"



ENLARGED FLOOR PLAN

CENTRAL TREATMENT PLANT BLDG A RENOVATIONS

TACOMA, WASHINGTON
REVISION DATE

DATE 12.19.25 JOB NO. 2240018890
PERMIT / BID SET

A140
WHITE
DRAWING NO.

PLOTTED: 1/6/2026 4:32:46 PM PROJECT: 2240018890 - CENTRAL TREATMENT PLANT
 FILE PATH: A:\edek\Draws\2240018890\Central Treatment Locker Room Remodel\1.rvt

© All rights reserved. No part of this document may be reproduced in any form or by any means without permission in writing from Helix Design Group a Division of Shive-Hattery.

FLOOR PLAN LEGEND

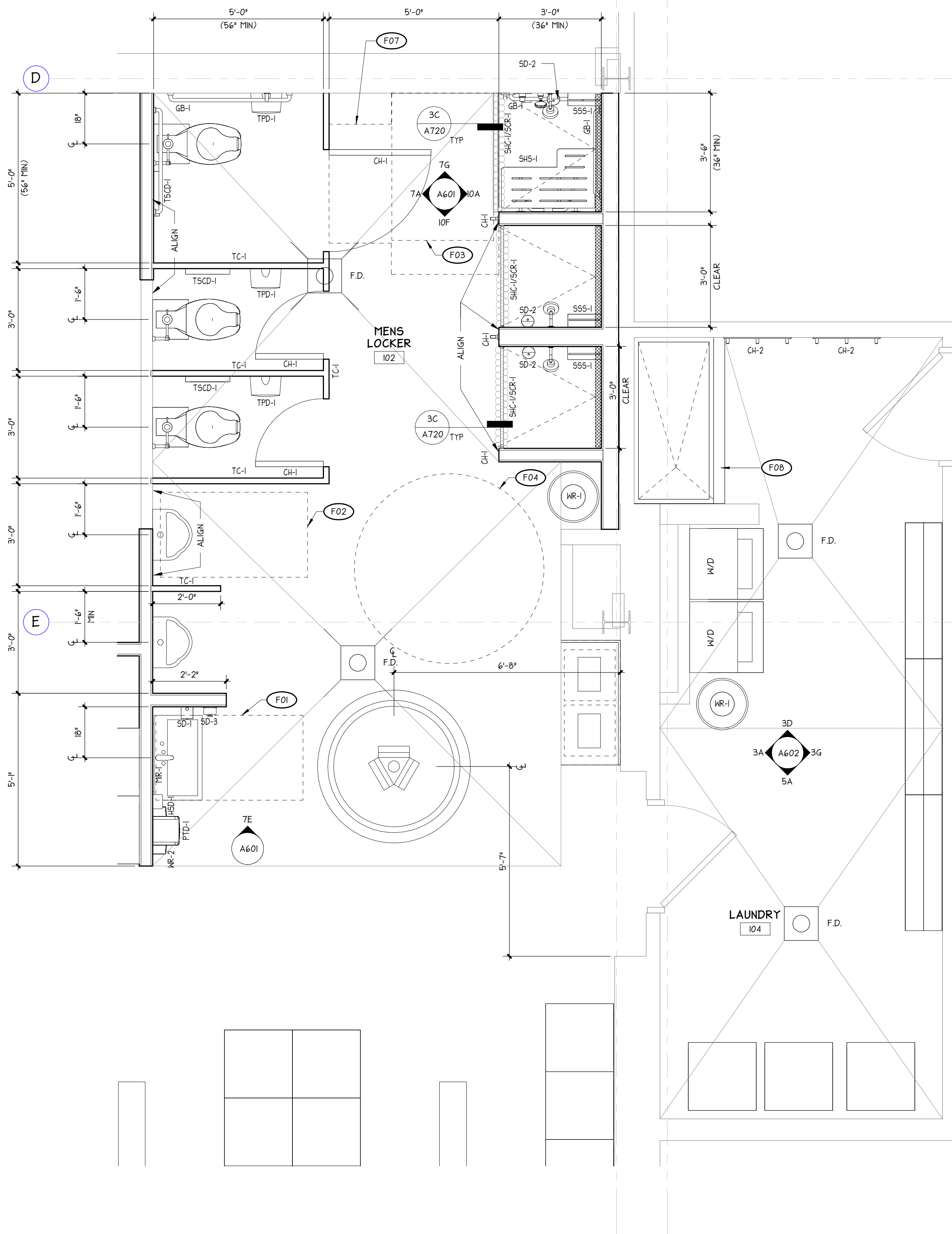
DESCRIPTION	SYMBOL AND TEXT
ROOM IDENTIFICATION room name room number	ROOM NAME 100
SHINGING DOOR door number, minimum door strike side clearance distances	
FLOOR DRAIN sloped floor	
STRUCTURAL COLUMN centered on grid line, centered in wall	

GENERAL NOTES

- NOTE
- ABBREVIATIONS:
(D) - DEMOLITION
(R) - RELOCATE
(E) - EXISTING TO REMAIN
(S) - SALVAGE
 - REFER TO SHEET **G040** FOR STANDARD ABBREVIATIONS LIST.
 - INSTALL SOUND BATT INSULATION AT ALL INTERIOR (STUD) WALLS.
 - PROVIDE TUBE STEEL COLUMN SUPPORT AT ALL PARTIAL HEIGHT WALLS.
 - CEMENTITIOUS UNDERLAYMENT SHALL BE APPLIED TO NEW AND EXISTING CONCRETE TO ENSURE UNIFORMITY OF APPEARANCE IN THE FINISHED FLOOR. SELF-LEVELING UNDERLAYMENT SHALL BE USED FOR EXISTING SLABS TO REMAIN AND NEW SLABS WHERE FLOOR IS RELATIVELY LEVEL. TROUBLEABLE UNDERLAYMENT SHALL BE USED FOR NEW CONCRETE SLAB AREAS THAT ARE SLOPED TO DRAIN.
 - NEW SLAB AREAS ON FLOOR PLAN ARE TO BE SLOPED 1/4" PER FOOT TO NEW FLOOR DRAINS AS INDICATED.

FLOOR PLAN NOTES

SYMBOL	NOTE
(F01)	30" x 52" FORWARD CLEARANCE AT SINK.
(F02)	30" x 52" FORWARD CLEARANCE AT URINAL.
(F03)	36" x 52" CLEAR FLOOR SPACE AT ADA SHOWER.
(F04)	67" TURNING RADIUS.
(F05)	RELOCATE EXISTING BOOT WARMERS.
(F06)	COMMERCIAL STACK WASHER/ DRYER COMBO. F.O.I.C.
(F07)	T-SHAPED TURNING SPACE.
(F08)	6" HIGH METAL FRAMING AROUND STAINLESS STEEL DROP-IN TROUGH SINK. FINISH TOP AND HALL WITH STAINLESS STEEL PANELS CAULK SEAMS.



ENLARGED FLOOR PLAN

CENTRAL TREATMENT PLANT BLDG A RENOVATIONS

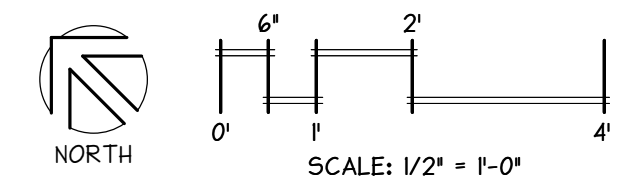
TACOMA, WASHINGTON

DATE: 12.19.25 JOB NO.: 2240018890
PERMIT / BID SET

A141
WHITE
DRAWING NO.

PLOTTED: 1/6/2026 4:32:28 PM PROJECT: 2240008890 - CENTRAL TREATMENT PLANT
 FILE PATH: A:\edek\Draw\2240008890 Central Treatment Locker Room Remodel\2240008890-A-R24-Central Treatment Locker Room Remodel.rvt

100 ENLARGED FLOOR PLAN - MENS 101
1/2" = 1'-0"



© All rights reserved. No part of this document may be reproduced in any form or by any means without permission in writing from Helix Design Group a Division of Shive-Hattery.

DOOR SCHEDULE

NO	DOOR							FRAME						NOTES
	WIDTH	HEIGHT	TYPE	MATERIAL	FINISH	GLAZING	RATING	HARDWARE GROUP	TYPE	MATERIAL	FINISH	GLAZING		
101	3'-0"	7'-0"	D2(E)	HM(E)	PT	(E)	-	HDW-1 (5)	F(E)	HM(E)	PT	-	[1] [3]	
102(R)	3'-0"	7'-0"	D1(E)	MD(E)	FF(E)	-	-	HDW-2 (5)	F(E)	HM(E)	PT	-	[2] [6]	
104A	3'-0"	7'-0"	D1(E)	HM(E)	PT	-	-	HDW-2 (5)	F(E)	HM(E)	PT	-	[3] [4]	
104B	3'-2"	7'-0"	D1(E)	MD(E)	FF(E)	-	-	HDW-2 (5)	F(E)	HM(E)	PT	-	[4] [6]	
107(R)	3'-0"	7'-0"	D1(E)	MD(E)	FF(E)	-	-	HDW-2 (5)	F(E)	HM(E)	PT	-	[2] [4] [6]	

GENERAL NOTES

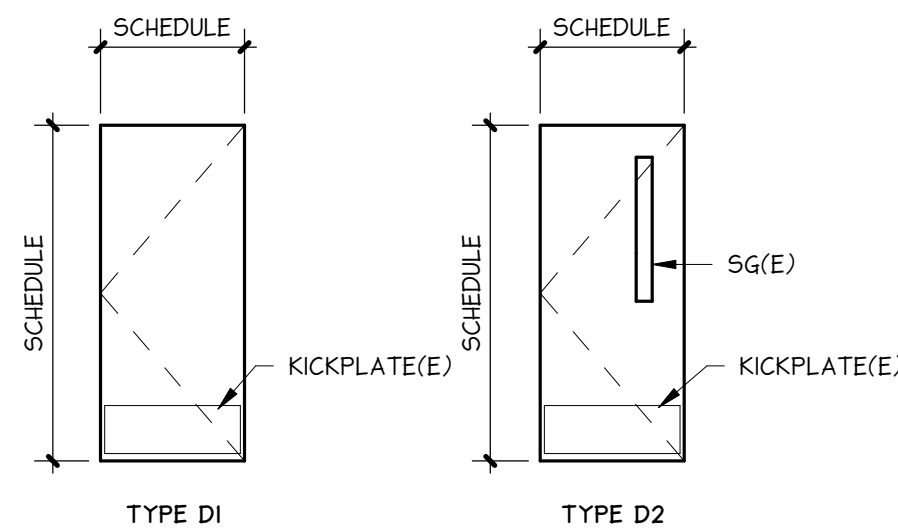
- SUPPLIER: FINISH HARDWARE SHALL BE SUPPLIED BY A FACTORY AUTHORIZED BUILDER'S HARDWARE DISTRIBUTOR FOR PRODUCTS AS SPECIFIED OR APPROVED AND WHO HAS BEEN FURNISHING HARDWARE IN THE SAME AREA AS THE PROJECT FOR A PERIOD OF NOT LESS THAN TWO (2) YEARS. THE SUPPLIER'S ORGANIZATION SHALL INCLUDE A MEMBER OF THE AMERICAN SOCIETY OF ARCHITECTURAL HARDWARE CONSULTANTS WHO IS AVAILABLE AT ALL REASONABLE TIMES DURING THE COURSE OF WORK TO MEET WITH THE OWNER, ARCHITECT AND GENERAL CONTRACTOR FOR PROJECT HARDWARE CONSULTATION.
- PROVIDE HARDWARE THAT MEETS OR EXCEEDS HANDICAP ACCESSIBILITY PER LOCAL BUILDING CODES. CONFORM TO THE AMERICANS WITH DISABILITIES ACT (ADA) ACCESSIBILITY GUIDELINES.
- ALL FINISH HARDWARE SHALL COMPLY WITH APPLICABLE LOCAL AND CURRENT BUILDING CODES.
- ITEMS NOT SPECIFICALLY MENTIONED BUT NECESSARY TO COMPLETE THE WORK SHALL BE FURNISHED, MATCHING THE ITEMS SPECIFIED IN QUALITY AND FINISH.
- ALL HARDWARE IS TO BE ANSI/BHMA GRADE I, UNLESS SPECIFIED OTHERWISE.
- EXPOSED SURFACES OF ALL HARDWARE SHALL MATCH BUILDING STANDARD TYPE AND FINISH UNLESS OTHERWISE STATED IN COLORS AND MATERIALS SCHEDULE.

SCHEDULE NOTES

- APPLY AF-1 TO VISION LITE IN EXISTING DOOR.
- PANT ROOMSIDE OF DOOR FRAME ONLY.
- PANT EXISTING HOLLOW METAL DOOR PT-C.
- EXISTING KICKPLATE TO REMAIN.
- REFER TO SPECIFICATIONS MANUAL SECTION 08 71 00 DOOR HARDWARE. COORDINATE WITH OWNER'S SECURITY CONTRACTOR FOR FINAL SPECIFICATIONS REVIEW.
- CONTRACTOR TO VERIFY CONDITION OF EXISTING DOOR. REPAIR DAMAGED DOORS, REFACE FINISH FACE AS NECESSARY.

GENERAL NOTES

- REFER TO COLORS AND MATERIALS SCHEDULE FOR COLORS AND FINISHES.
- REFER TO COLORS AND MATERIALS SCHEDULE AND DOOR SCHEDULE FOR GLAZING TYPES. INSULATING GLASS UNITS SHALL BE LABELED AND NFRC CERTIFIED.
- REFER TO SHEET **G040** FOR STANDARD ABBREVIATIONS LIST.
- *PAINT* (PT) IS A GENERIC TERM USED IN DOCUMENTS. REFER TO COLORS AND MATERIALS SCHEDULE FOR SPECIFIC TYPE OF APPLIED FINISH. THE TERM *PAINT* REFERS TO PAINTS, STAINS, SEALERS AND OTHER APPLIED COATINGS.



DOOR TYPES

1/4" = 1'-0"

FRAME TYPES

1/4" = 1'-0"

ROOM FINISH SCHEDULE

NO	ROOM NAME	FLOOR			BASE	CEILING		WALL		NOTES
		MATERIAL	FINISH	MATERIAL		FINISH	MATERIAL	FINISH		
FP-01	LOBBY/STAIRS(E)	CONC(E)	VCT(E)	RB(E)	GWB(E)	PT(E)	GWB(E)	(E)	[1]	
101	UNIFORM STORAGE	CONC	SEAL	RB	ACT	FF	GWB(E)/GWB	FRP	[4]	
102	MENS LOCKER	CONC	SEAL/TL	RB/TL	ACT/GWB	FF/PT	GWB(E)/CBB	PT/TL		
104	LAUNDRY	CONC	SEAL	RB	GWB(E)	PT	GWB(E)	FRP/PT	[2]	
106	HALL	CONC	VCT(E)	RB(E)/RB	ACT	FF	GWB(E)/GWB	PT	[3]	
107	WOMENS LOCKER	CONC	SEAL/TL	RB/TL	GWB	PT	GWB(E)/CBB	PT/TL/FRP	[4]	

SCHEDULE NOTES

- NO WORK IN THIS AREA.
- APPLY SEALER TO EXISTING CONCRETE FLOOR.
- MATCH EXISTING ADJACENT FINISHES.
- FRP FULL HEIGHT OF WALL.

GENERAL NOTES

- REFER TO COLORS AND MATERIALS SCHEDULE FOR COLORS AND FINISHES.
- *PAINT* (PT) IS A GENERIC TERM USED IN DOCUMENTS. REFER TO COLORS AND MATERIALS SCHEDULE FOR SPECIFIC TYPE OF APPLIED FINISH. THE TERM *PAINT* REFERS TO PAINTS, STAINS, SEALERS AND OTHER APPLIED COATINGS.
- PANT ALL EXPOSED CONDUITS AND PIPES; MATCH COLOR OF ADJACENT MATERIAL.
- PANT ALL EXPOSED SHEET METAL (GALVANIZED STEEL) HVAC DUCTS. REFER TO COLORS AND MATERIALS SCHEDULE FOR PAINT COLOR.
- INSTALL TILE PER TCNA: FLOORS F11, WALLS W24F.



PLOTTED: 1/6/2026 6:32:28 PM PROJECT: 2240018890 - CENTRAL TREATMENT PLANT
 FILE PATH: A:\edek Dess\2240018890 Central Treatment Locker Room Remodel\2240018890-A-R24-Central Treatment Locker Room Remodel.rvt

CENTRAL
TREATMENT PLANT
BLDG A RENOVATIONS

TACOMA, WASHINGTON

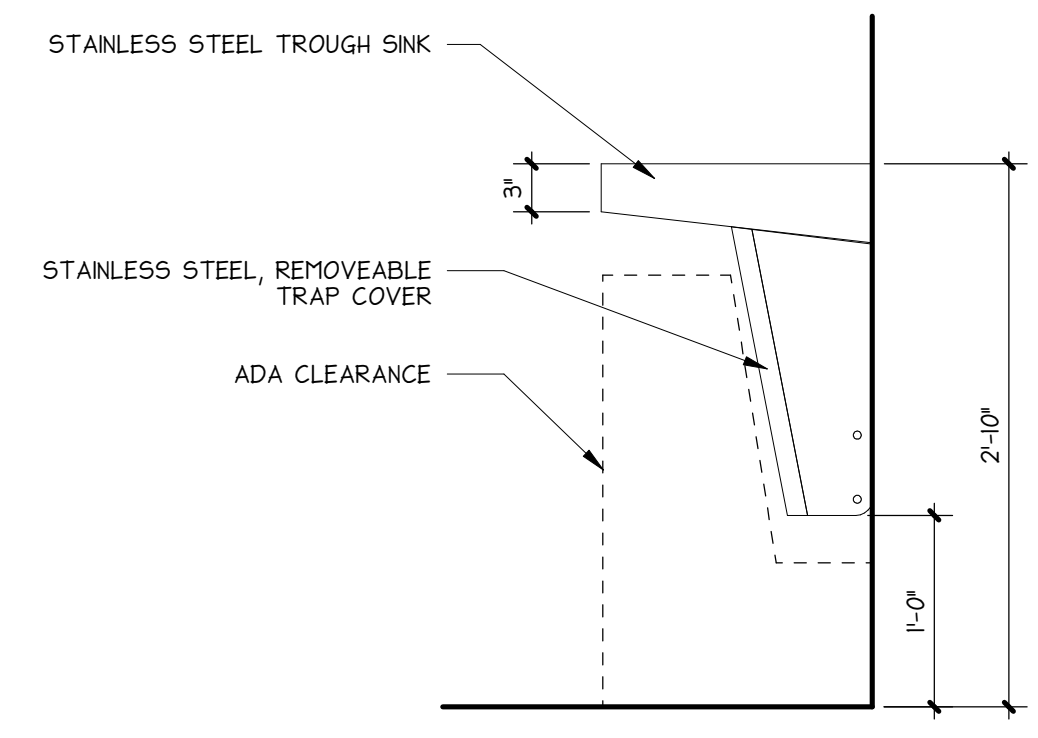
REVISION	DATE
1	ADDENDUM NO.3 01.16.25

DATE: 12.19.25 JOB NO.: 2240018890

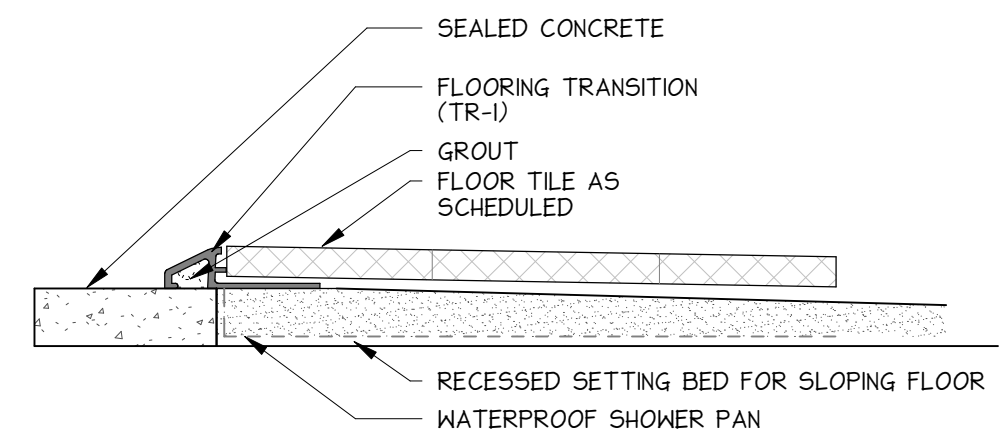
PERMIT / BID SET

A200

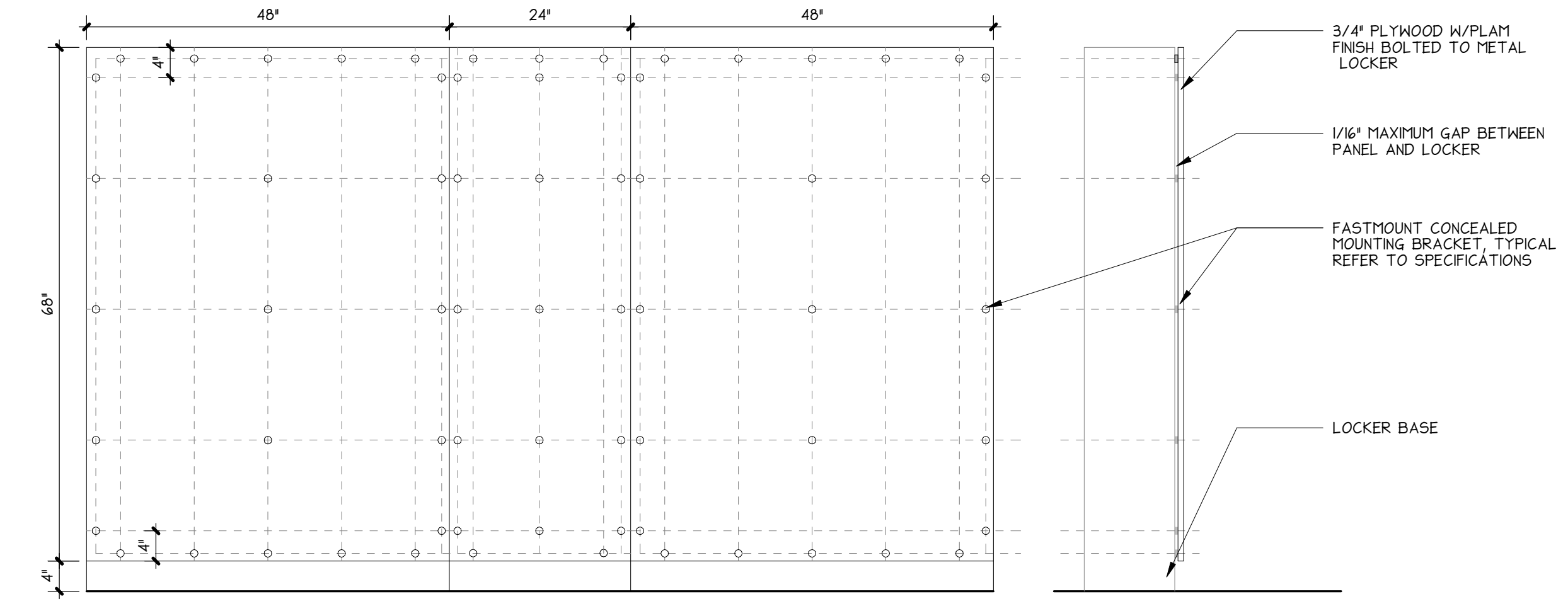
WHITE
DRAWING NO.
© All rights reserved. No part of this document may be reproduced in any form or by any means without permission in writing from Helix Design Group a Division of Shive-Hattery.



3A DETAIL
1' = 1'-0"



3C DETAIL
6" = 1'-0"

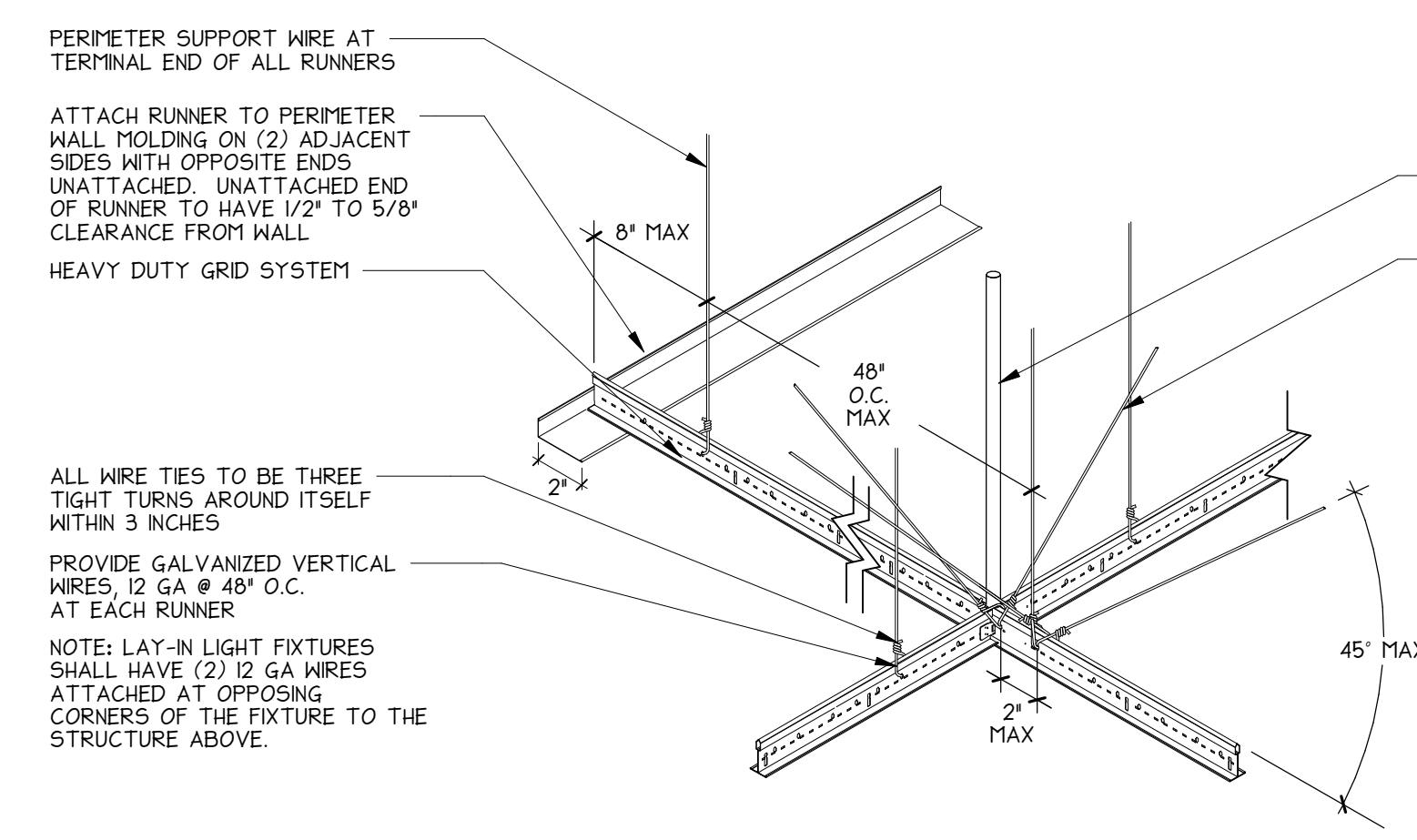


3F DETAIL
3/4" = 1'-0"
FRONT ELEVATION | SIDE ELEVATION

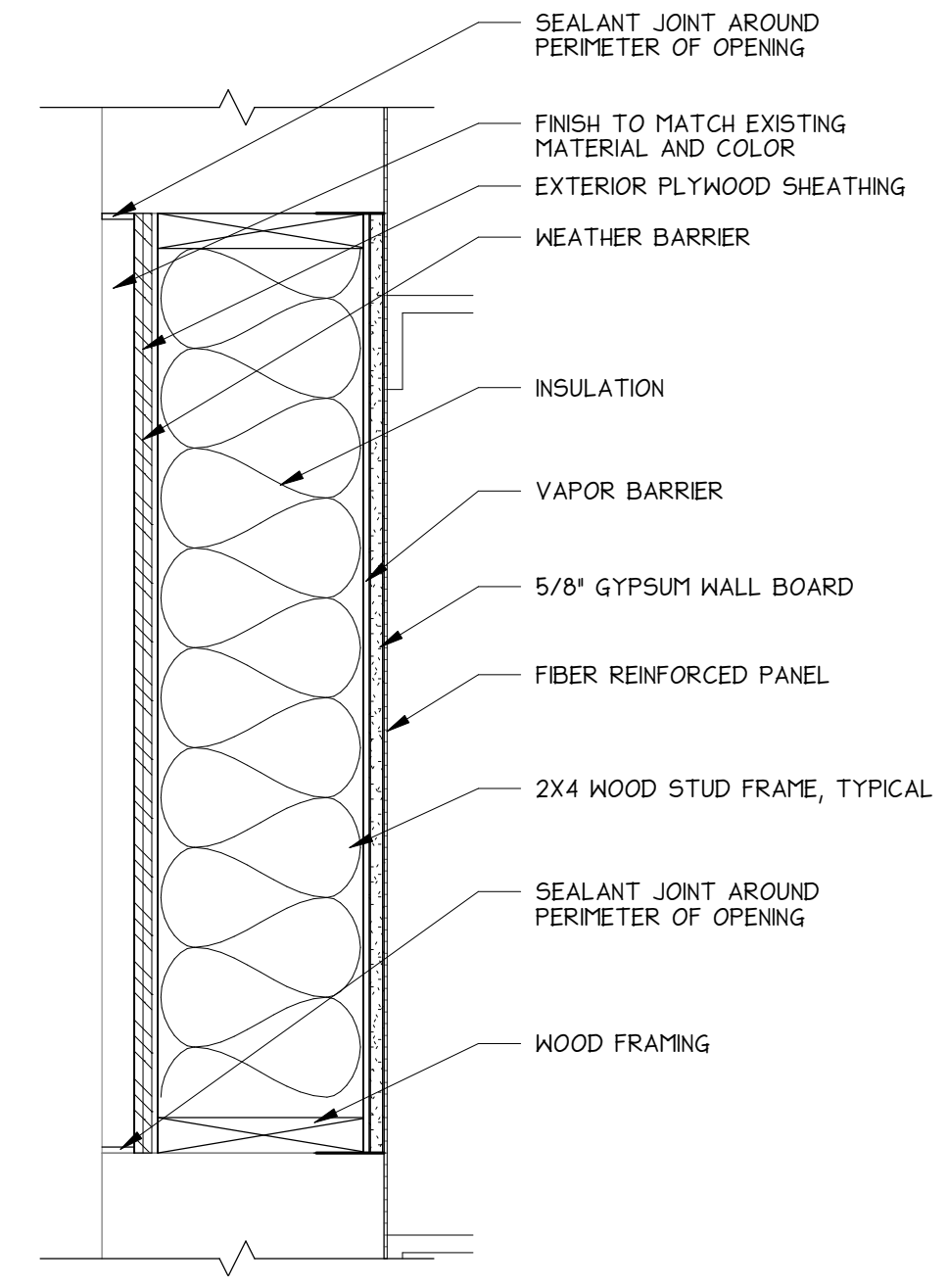


TACOMA, WASHINGTON	
REVISION	DATE
1	ADDENDUM NO.3 01.16.26

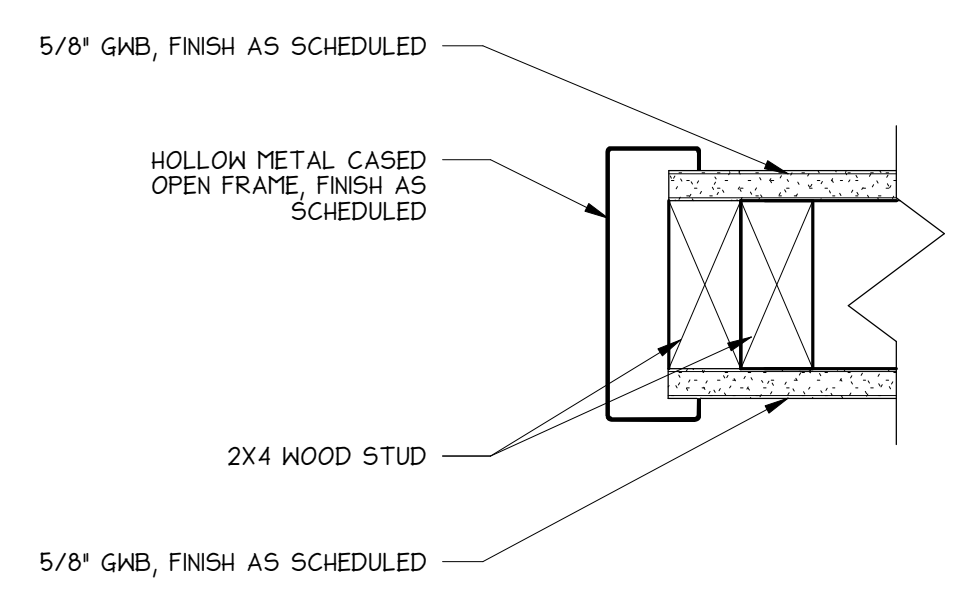
DATE	JOB NO.
12.19.25	2240018890



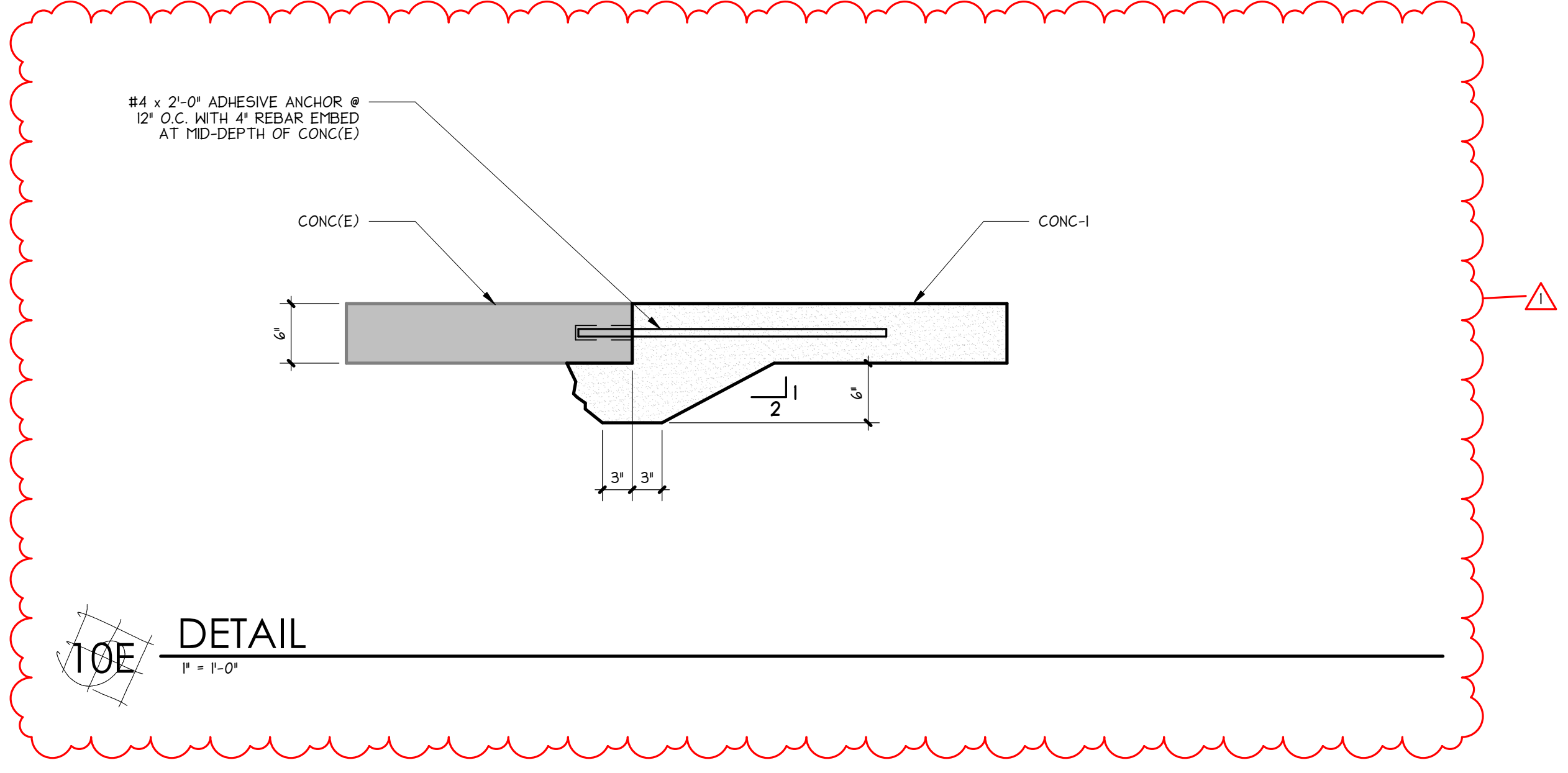
7A DETAIL
1 1/2" = 1'-0"



7E DETAIL
1 1/2" = 1'-0"



10A DETAIL
3" = 1'-0"



10E DETAIL
1" = 1'-0"

PLOTTED: 1/6/2026 6:30 PM PROJECT: 2240018890 - CENTRAL TREATMENT PLANT FILE PATH: A:\edek\Draw\2240018890-Central Treatment Locker Room Remodel.rvt