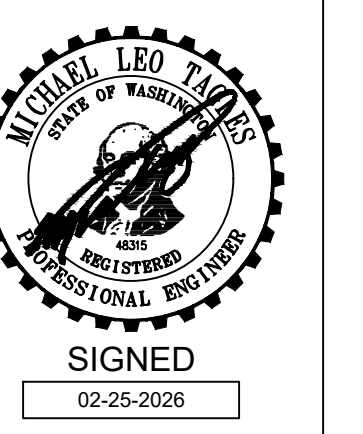


GENERAL NOTES:

- SEE MECHANICAL GENERAL NOTES ON SHEET M0.02.
- DRAWINGS ARE BASED ON AS-BUILT DRAWINGS AND ARE CONSIDERED APPROXIMATE. CONTRACTOR SHALL PROVIDE UTILITY LOCATE AND GROUND PENETRATING RADAR SCAN PRIOR TO DOING ANY WORK. CONTRACTOR ASSUME PIPING IS WITHIN 10 FEET OF LOCATIONS SHOWN AND WILL PROVIDE OFFSETS AS REQUIRED TO CONNECT AND TO AVOID EXISTING UTILITIES. CONTRACTOR SHALL ADJUST ROUTING AND PROVIDE SHOP DRAWING FOR ENGINEER/OWNER REVIEW AND ACCEPTANCE.
- PROVIDE SAWCUTTING & TRENCHING FOR NEW MECHANICAL UTILITIES.
- RESTORE SITE FEATURES TO PRE-CONSTRUCTION CONDITION OR BETTER. SEE PHOTOS ON SHEET M0.11.
- RE-STRIP AND RE-NUMBER AT PARKING LINES.
- SEE SHEETS M3.22 AND M3.23 FOR VALVES AND OTHER ITEMS NOT SHOWN ON THIS PLAN.

HULTZ BHU
engineers inc
1111 Fawcett Ave Suite 100
Tacoma, WA 98402
Phone: (253) 383-3257 Fax: (253) 383-3283
general@hultzbhu.com
Job Number: 25-070

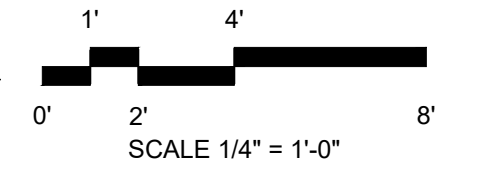
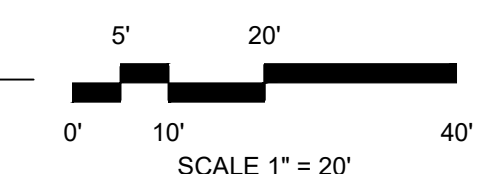
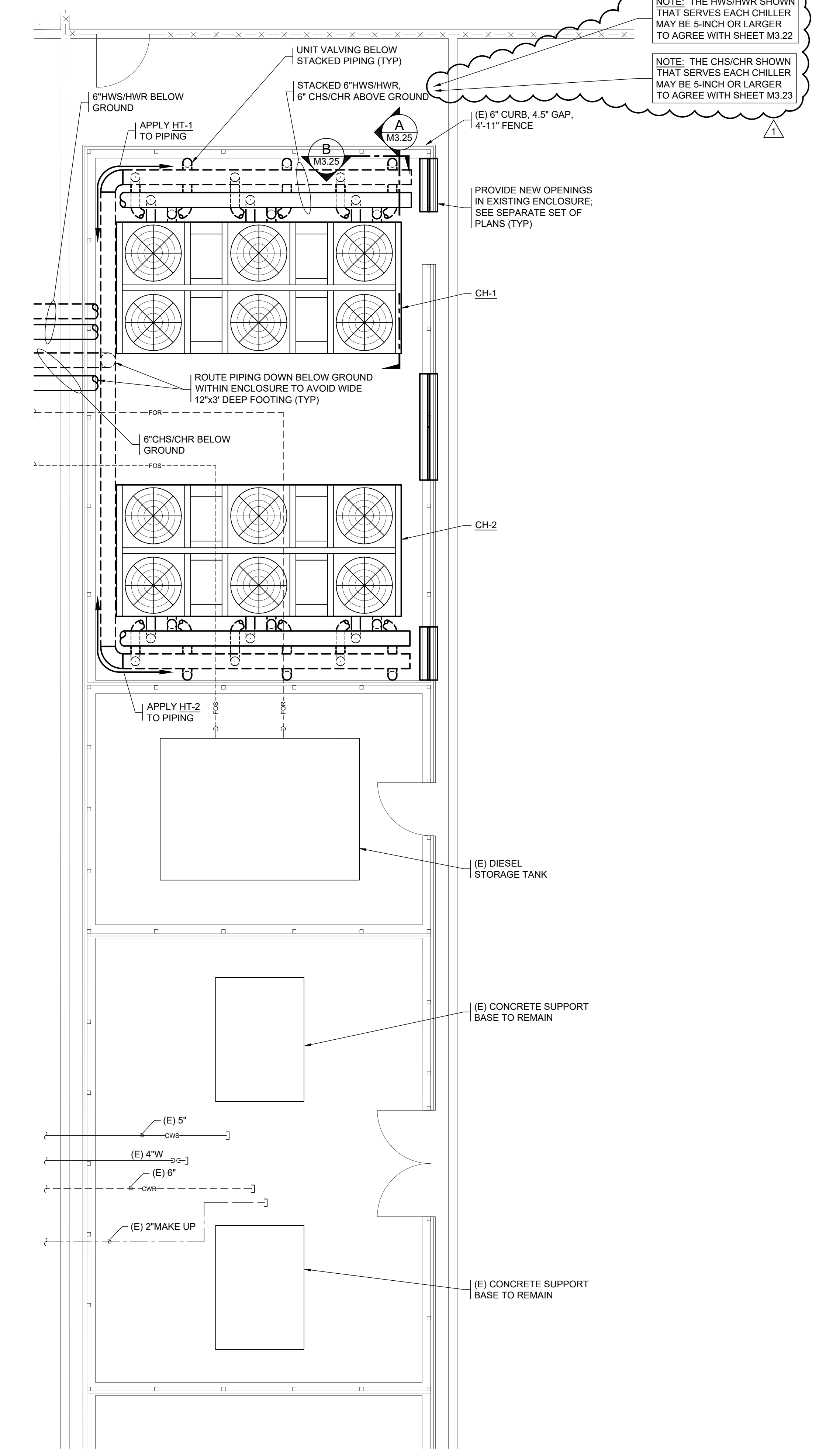
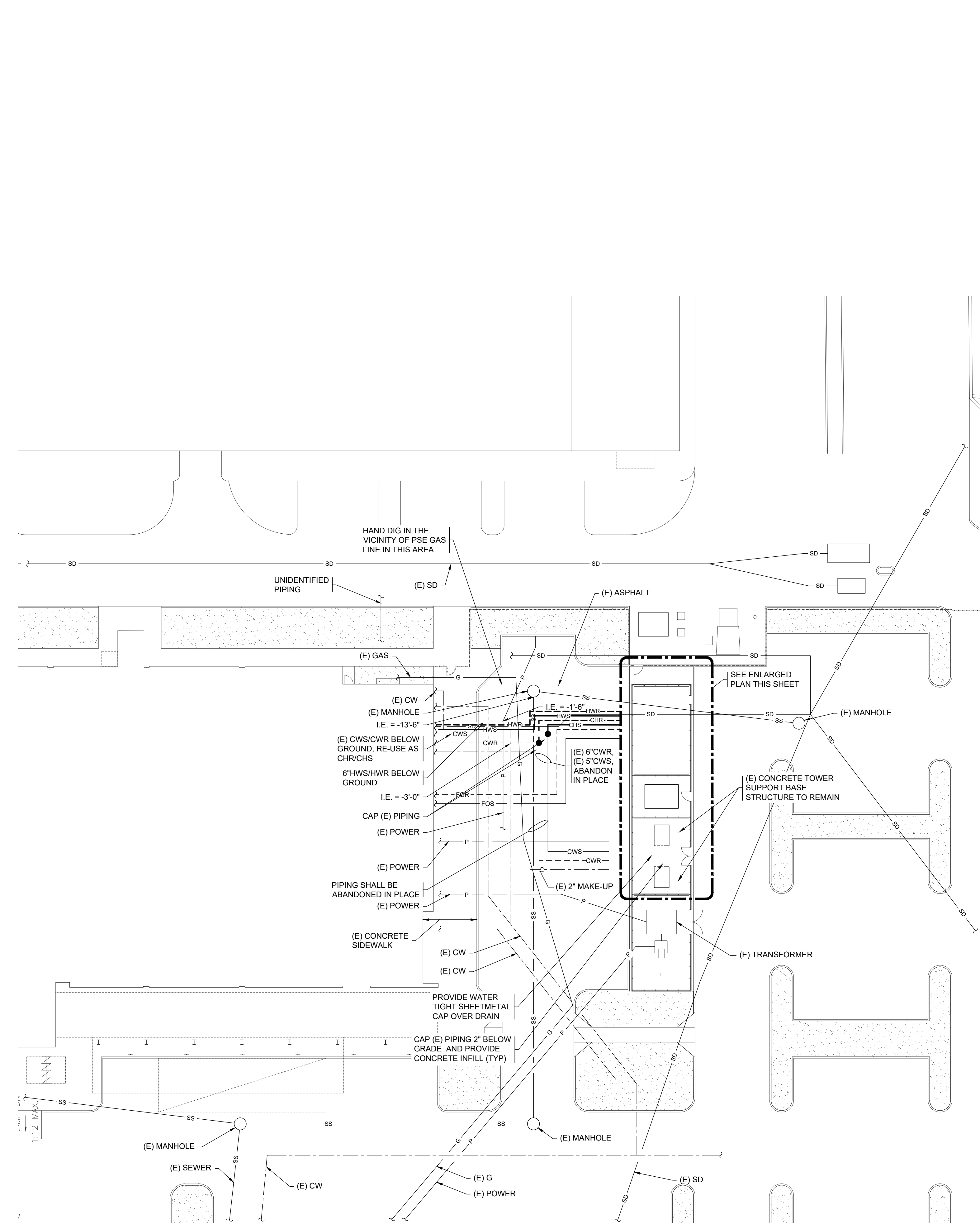
**TACOMA POLICE HEADQUARTERS
HVAC UPGRADES**
3701 SOUTH PINE ST.
TACOMA, WA 98409



SHEET TITLE: MECHANICAL SITE PLAN - NEW
DRAWN: BS CHECKED: MT DATE: 02.25.26
REVISIONS:
ADDENDUM NO 1 03.24.26

M0.12

RE-BID SET 02-25-26



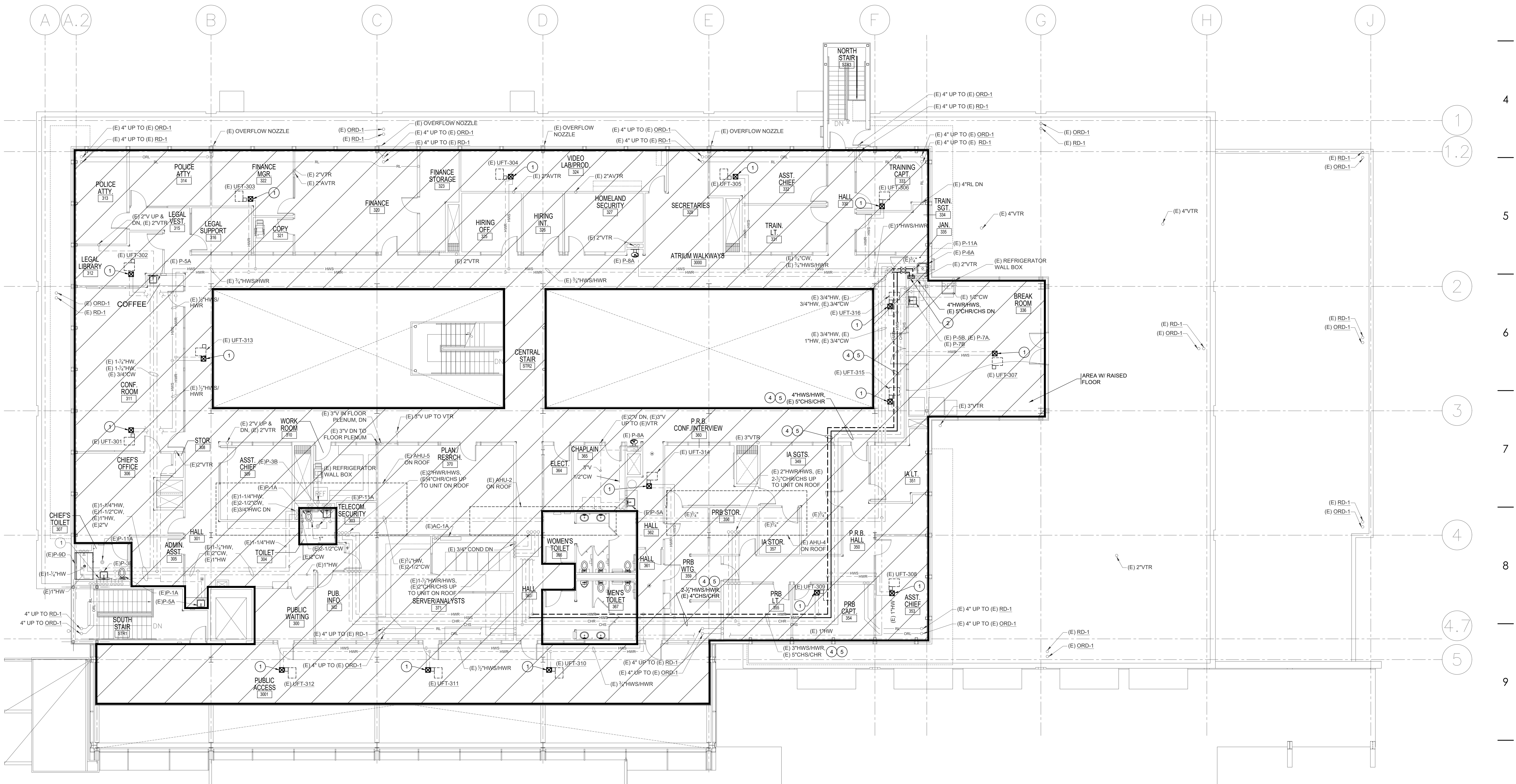
SHEET SIZE IS TRUE SCALE WHEN ABOVE LINE MEASURES AS NOTED

GENERAL NOTES:

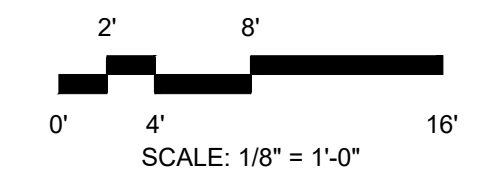
- SEE MECHANICAL GENERAL NOTES ON SHEET M0.02.
- EXISTING CEILING ARE T-BAR EXCEPT AT RESTROOMS WHICH ARE HARD LID GWB. CONTRACTOR SHALL REMOVE AND RE-INSTALL CEILING TO ACCOMMODATE THE WORK.
- HWS/HWR PIPING IS LOCATED BELOW RAISED FLOOR. SEE PHOTO 8 ON SHEET M0.11 SHOWING HOW FLOOR IS ACCESSED. NOTE THAT OWNER WILL RELOCATE OFFICE FURNITURE/PARTITIONS TO ACCOMMODATE CONTRACTOR ACCESS.
- NOT ALL KEYED NOTES ARE USED ON EACH SHEET.

KEYED NOTES:

- REPLACE (E) 3-WAY CONTROL VALVE ASSEMBLY W/ NEW 2-WAY HEATING CONTROL VALVE ASSEMBLY.
- PATCH AND REPAIR (E) GWB WALLS TO ALLOW FOR PIPING REPLACEMENT.
- UNDER ALTERNATE BID NO. 1, REMOVE (E) 8" VENT SERVING DEMOD WATER HEATERS. RE-USE PENETRATION LOCATION FOR NEW CONCENTRIC VENT SERVING NEW WATER HEATERS. RE-SEAL.
- FOR HWS/HWR PIPING OUTSIDE MECHANICAL ROOM, EXISTING SCHEDULE 40 STEEL GROOVED PIPING MAY BE RE-USED. REMOVE EXISTING VICTAULIC COUPLINGS AND GASKETS. CLEAN GROOVED SURFACE ON PIPING, AND APPLY NEW COUPLINGS AND GASKETS. REPAIR INSULATION WHERE DAMAGED/ DISTURBED. LENGTH BETWEEN FITTING VARIES AND COUNT IS UNKNOWN. FOR BIDDING PURPOSES, ASSUME PIPING LENGTHS ARE 10 FOOT LENGTHS.
- PIPING ROUTES WITHIN RAISED ACCESS FLOOR SPACE. ACCESS IS LIMITED SINCE CARPET TILES DO NOT ALIGN WITH RAISED FLOOR PANELS.
- PIPING RUNS IN T-BAR CEILING.



THIRD FLOOR PLAN - PLUMBING
SCALE: 1/8" = 1'-0"



RE-BID SET 02-25-26

HULTZ & BHU
ENGINEERS ARCHITECTS
1111 Fawcett Ave. Suite 100
Tacoma, WA 98402
Phone: (252) 385-5237 Fax: (252) 385-5235
general@hultzandbhu.com Job Number: 25-076

**TACOMA POLICE HEADQUARTERS
HVAC UPGRADES**
3701 SOUTH PINE ST.
TACOMA, WA 98409



SHEET TITLE: THIRD FLOOR PLAN - PLUMBING
DRAWN: BS CHECKED: MT DATE: 02.25.26
REV/SIONS:
△ ADDENDUM NO. 1 03.24.26

M3.13

SHEET SIZE IS TRUE SCALE WHEN ABOVE LINE MEASURES AS NOTED

