



## Questions and Answers

### MRP 2022-0023, E. "F" St., between E 3rd St. and E 11th St. (Re-Bid) RFB Specification No. TW25-0288F

All interested parties had the opportunity to submit questions in writing by email to Brandon Snow, Senior Buyer by date questions were due. The answers to the questions received are provided below and posted to the City's website at [www.TacomaPurchasing.org](http://www.TacomaPurchasing.org). Navigate to [Current Contracting Opportunities / Public Works and Improvements Solicitations](#), and then click [Questions and Answers](#) for this Specification. This information IS NOT considered an addendum. Respondents should consider this information when submitting their proposals.

- 1. Question: When is the anticipated start date of this project? We are scheduled to wrap up our current project in Late April of 2026. Would it be ok with Tacoma Water if this project started in May of 2026?**

Answer: The construction phase of the E. F St. project is anticipated to start in April 2026 to May of 2026, as water work must be completed by June 2026 to July 2026 for City of Tacoma Public Works to begin pavement restoration along E. F St.

- 2. Question: I am going through the spec book for this project and it is showing that Railroad Protective Liability Insurance, but in the plans I am not seeing any active tracks, only abandoned ones. Can you please confirm if there are live tracks that would be part of this work?**

Answer: There will be no work directly under the railroad tracks, however pipe replacement will occur within 50ft of the tracks, prompting the requirement for Railroad Protective Liability Insurance. Active railroad tracks are present along E. F St. The railroad tracks are on the West of 1013 E. F. St. and cross to the East side of E. F St. after the said address. See below picture representing E. F St.





## Questions and Answers

3. **Question:** I am just starting to get into the East F Street project. Unfortunately I didn't see the invite for the pre-bid meeting that was held on the 12<sup>th</sup> until last night. Do you have any pictures or videos of the sub-surface conditions that were explored during that time? Any information would be appreciated.

Answer: Yes, see below for the findings from the pre-bid meeting.

### **TW25-0288F – Pre-Bid Information.**

#### **Buyer Note:**

No potential respondents were in attendance, only Tacoma Water employees were present.

#### **Engineer's Notes:**

A pre-bid onsite visit was conducted along E. F St., between E. 11th St. and E. 3rd St. on December 12, 2025 at 11:00 AM PST.

Tacoma Water crews dug three test holes to expose the existing main in the vicinity of the proposed project and to assess groundwater conditions.

Water was observed in each test hole between 18-inches and 13-inches below the existing 8-inch water main. The following conditions were present during subgrade investigation:

- High tide of 12'4" that peaked at 11:17 AM PST
- Historic atmospheric river conditions in Washington State with unusually high rainfall from December 8 – December 11, 2025.
- Historic localized flooding in low lying areas throughout Tacoma and the State.

Construction of the subject project is anticipated to start in April/May 2026. The average depth of proposed 8-inch Ductile Iron water main for this project is 50-inches from top of surface to invert of pipe.

Note that the desktop study performed by GeoEngineers in October 2025 anticipates that typical groundwater elevation is between 6-7ft below ground surface during normal conditions.

**Included on the next page are images of the main and groundwater conditions captured during the onsite visit.**

**E. F St. Pre Bid Onsite Visit-11:00 AM PST December 12, 2025**

**E. F St. & E. 11th St - Sta. 14+21**



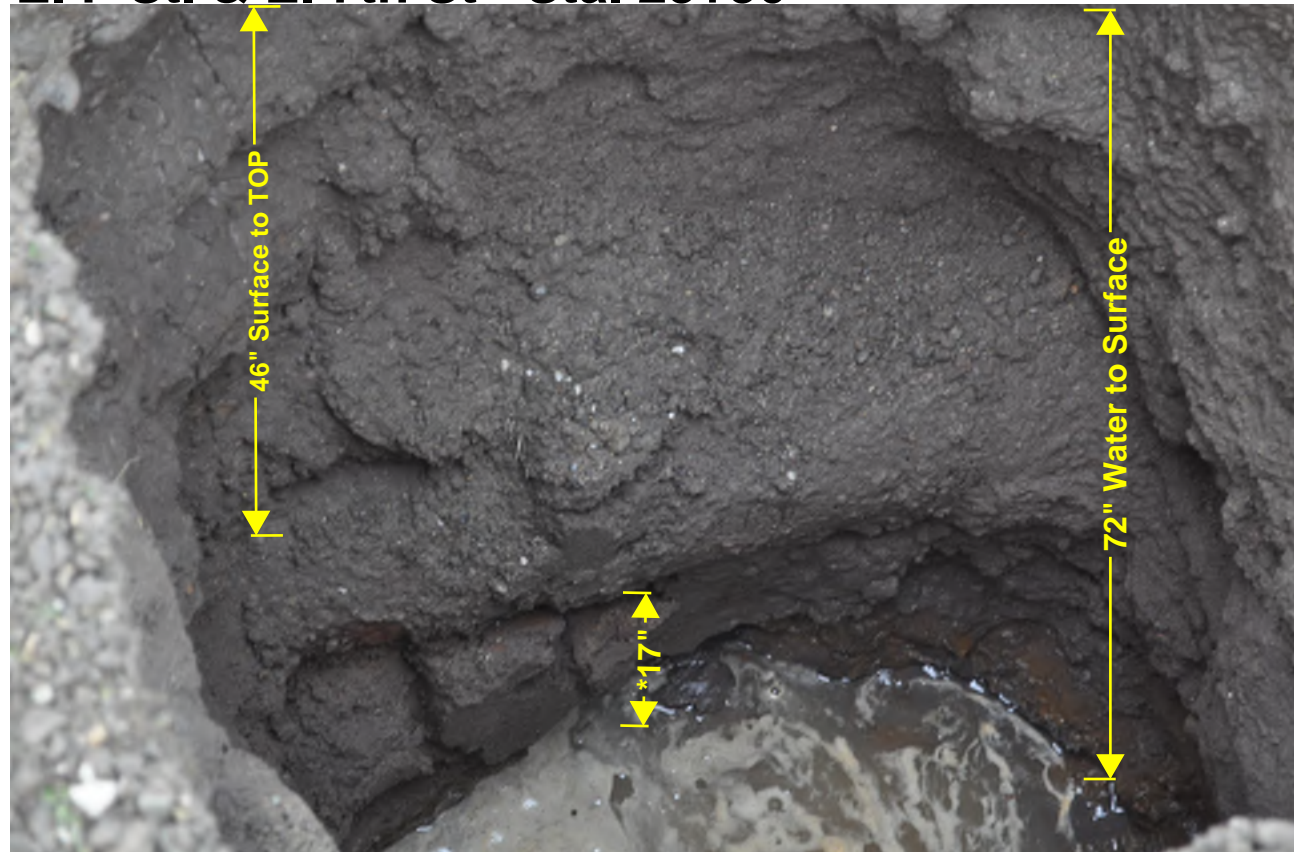
**\*Bottom of pipe to top of water-18"**

**E. F St. & E. 11th St - Sta. 14+21**



**\*Bottom of pipe to top of water-18"**

**E. F St. & E. 7th St - Sta. 23+30**



**\*Bottom of pipe to top of water-17"**

**E. F St. & E. 3rd St - Sta. 32+50**



**\*Bottom of pipe to top of water-13"**